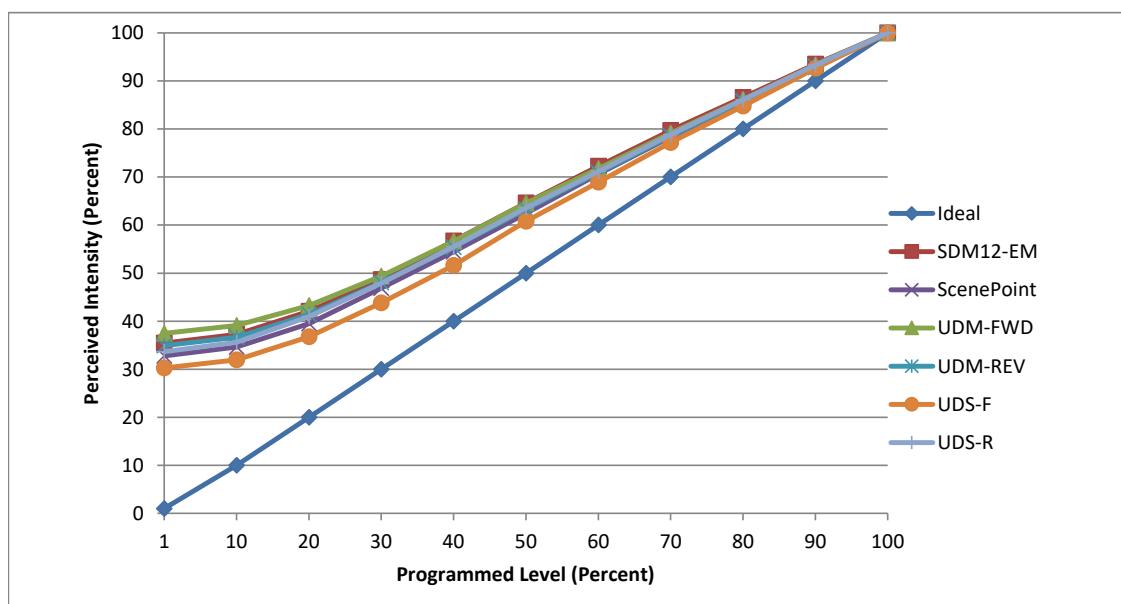


Manufacturer WAC Lighting
Model R2DRDN-F930-WT
Description small 33000k LED downlight
Driver external manuf. paired
Nominal Power (W) 9
Dimming Control Forward and Reverse Phase
Product Range Ion recessed downlights
Test Date 20 January, 2021

Dimmer Tested Against:	SDM12-EM	ScenePoint	UDM-FWD	UDM-REV	UDS-F	UDS-R
Commercial Pass/Fail	Pass	Pass	Pass	Pass	Pass	Pass
Residential Pass/Fail	Pass	Pass	Pass	Pass	Pass	Pass
Best-Fit Power Profile:						
Minimum ON	5	7	8	6	7	5
Maximum ON	57	62	59.5	55.3	63	53
Adjust	100	100	100	100	100	100
Light Output Range (vs. non-dimmed)						
Maximum (Perceived), 120V	95.1%	95.3%	95.2%	94.7%	95.1%	95.4%
Minimum (Perceived)	33.7%	31.2%	35.7%	33.0%	28.8%	32.1%
Minimum (Measured)	11.3%	9.7%	12.7%	10.9%	8.3%	10.3%

Linearity Curves (Best-fit Power Profile Applied):



jwm

Observations: Test performed in three unit configuration.