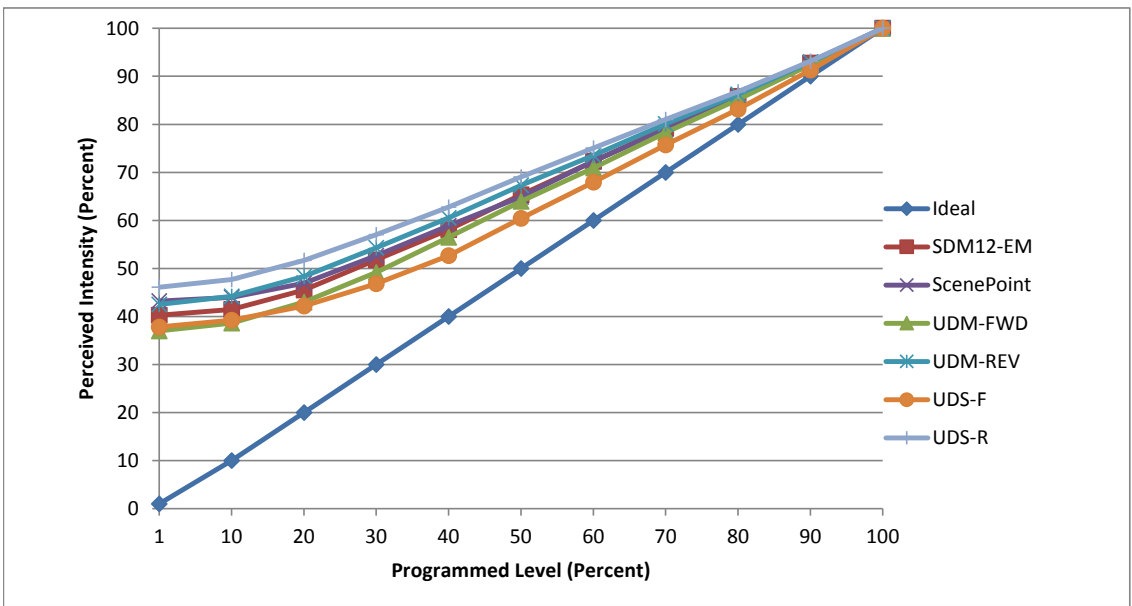


Manufacturer Utilitech
Model PAR20F2-30
Description PAR20 flood lights
Driver built-in
Nominal Power (W) 7
Dimming Control Forward and Reverse Phase
Product Range -
Test Date 27 June, 2018

Dimmer Tested Against:	SDM12-EM	SCP	UDM-FWD	UDM-REV	UDS-F	UDS-R
Pass/Fail	Pass	Pass	Pass	Pass	Pass	Pass
Best-Fit Power Profile:						
Minimum ON	15	18	16	15	18	14
Maximum ON	70	76	77	75	82	80
Adjust	100	100	100	100	100	100
Light Output Range (vs. non-dimmed)						
Maximum (Perceived), 120V	95.0%	94.7%	95.2%	95.0%	95.3%	99.5%
Minimum (Perceived)	38.2%	40.9%	35.2%	40.4%	36.1%	45.9%
Minimum (Measured)	14.6%	16.8%	12.4%	16.3%	13.0%	21.0%

Linearity Curves (Best-fit Power Profile Applied):



Observations: Tests were performed on a two unit configuration.
 Minimum values were raised high to avoid load flicker.

jwm