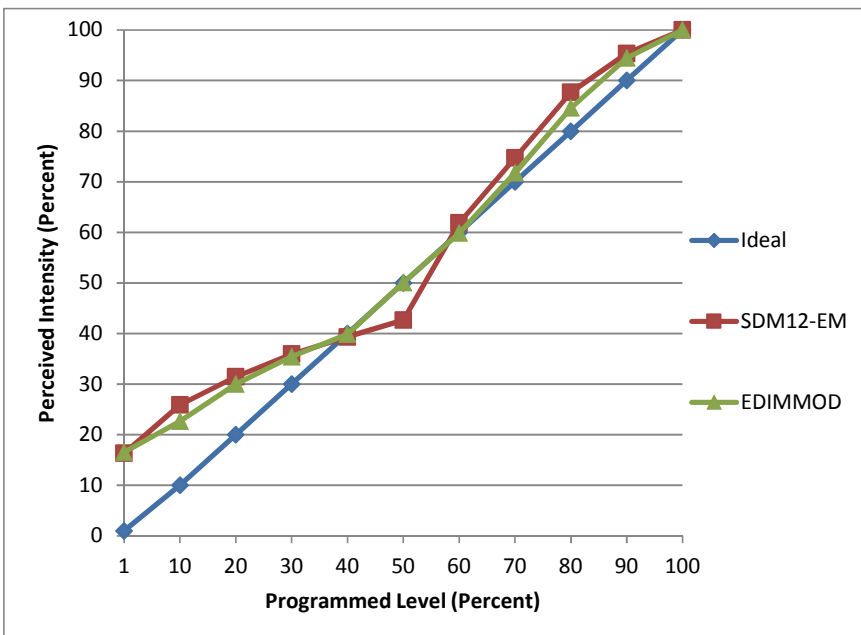


Manufacturer U.S. Green Lighting
Model B-A900SD-Q1D-01
Description A19 LED Lamp replacement
Driver Integrated
Nominal Power (W) 11
Dimming Control forward- and reverse-phase
Product Range
Test Date 2/24/2015

| Dimmer Tested Against: | SDM12-EM | EDIMMOD | |
|--|----------|---------|--|
| Pass/Fail | Pass | Pass | |
| Best-Fit Power Profile: | | | |
| Minimum ON | 2 | 0 | |
| Maximum ON | 80 | 75 | |
| Adjust | 100 | 100 | |
| Light Output Range (vs. non-dimmed) | | | |
| Maximum (Perceived) | 95.3% | 94.9% | |
| Minimum (Perceived) | 15.6% | 15.7% | |
| Minimum (Measured) | 2.4% | 2.5% | |

Linearity Curves (Best-fit Power Profile Applied):



Single sample does not present sufficient load to ScenePoint dimmer.
 Additional samples would be required in order to confirm that
 2 or more lamps on Scenepoint dimmer would provide sufficient load.