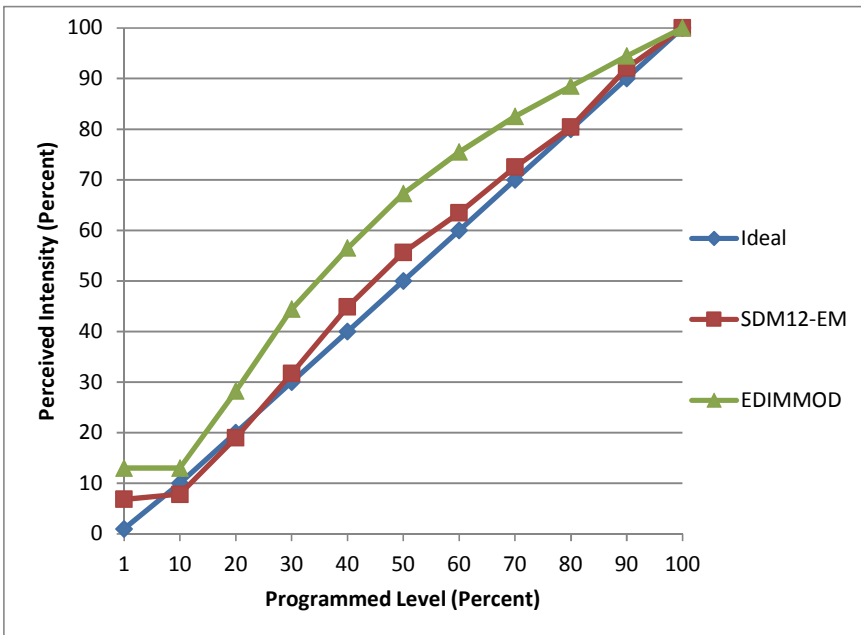


Manufacturer U.S. Green Lighting
Model A19D-11W-30
Description A19 LED Lamp replacement
Driver Integrated
Nominal Power (W) 11
Dimming Control forward- and reverse-phase
Product Range
Test Date 2/24/2015

Dimmer Tested Against:	SDM12-EM	EDIMMOD	
Pass/Fail	Pass	Pass	
Best-Fit Power Profile:			
Minimum ON	0	0	
Maximum ON	87	75	
Adjust	100	100	
Light Output Range (vs. non-dimmed)			
Maximum (Perceived)	95.1%	95.0%	
Minimum (Perceived)	6.5%	12.4%	
Minimum (Measured)	0.4%	1.5%	

Linearity Curves (Best-fit Power Profile Applied):



Observations: