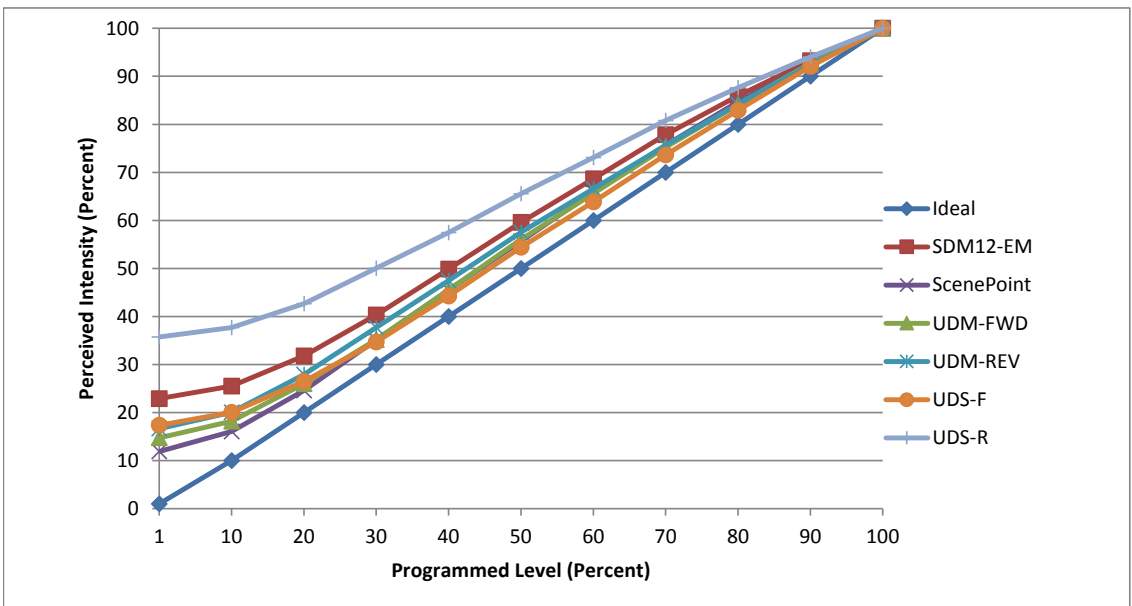


Manufacturer USAI
Model W2-136-15-075 (Cree CXB1310)
Description -
Driver Hatch XTC16-0350P-UNV-I (built-in)
Nominal Power (W) -
Dimming Control Forward and Reverse Phase
Product Range SilverLED
Test Date 11 July, 2018

Dimmer Tested Against:	SDM12-EM	SCP	UDM-FWD	UDM-REV	UDS-F	UDS-R
Pass/Fail	Pass	Pass	Pass	Pass	Pass	Pass
Best-Fit Power Profile:						
Minimum ON	8	8	8	8	11	8
Maximum ON	62	65	64	64	67	54
Adjust	100	100	100	100	100	100
Light Output Range (vs. non-dimmed)						
Maximum (Perceived), 120V	95.9%	95.4%	95.0%	95.2%	95.0%	94.5%
Minimum (Perceived)	22.0%	11.3%	14.0%	15.8%	16.5%	33.8%
Minimum (Measured)	4.8%	1.3%	2.0%	2.5%	2.7%	11.4%

Linearity Curves (Best-fit Power Profile Applied):



Observations:

jwm