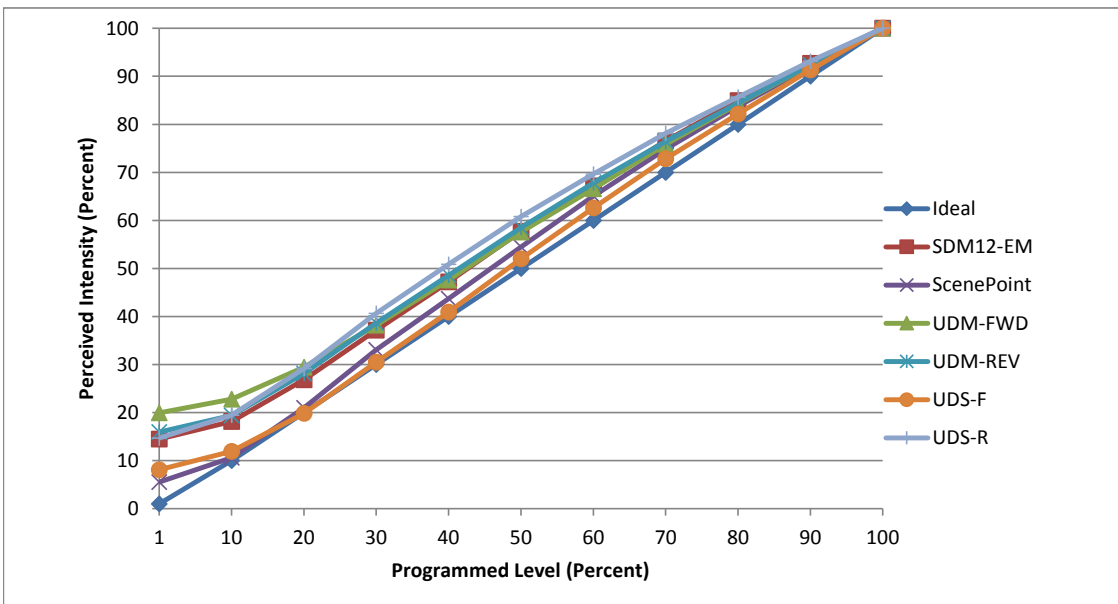


Manufacturer USAI
Model MINI FT 20W DIML19 (Cree MTG2)
Description -
Driver Hatch XTC32-0700P-UNV-I built-in
Nominal Power (W) 20
Dimming Control Forward and Reverse Phase
Product Range USAI Mini
Test Date 11 July, 2018

Dimmer Tested Against:	SDM12-EM	SCP	UDM-FWD	UDM-REV	UDS-F	UDS-R
Pass/Fail	Pass	Pass	Pass	Pass	Pass	Pass
Best-Fit Power Profile:						
Minimum ON	6	5	7	6	7	2.5
Maximum ON	61	65	63	62	67	54
Adjust	100	100	100	100	100	100
Light Output Range (vs. non-dimmed)						
Maximum (Perceived), 120V	95.6%	95.1%	95.2%	95.4%	94.8%	95.2%
Minimum (Perceived)	13.8%	5.3%	19.0%	15.2%	7.7%	14.0%
Minimum (Measured)	1.9%	0.3%	3.6%	2.3%	0.6%	2.0%

Linearity Curves (Best-fit Power Profile Applied):



Observations: Testing done in five unit configuration.

jwm