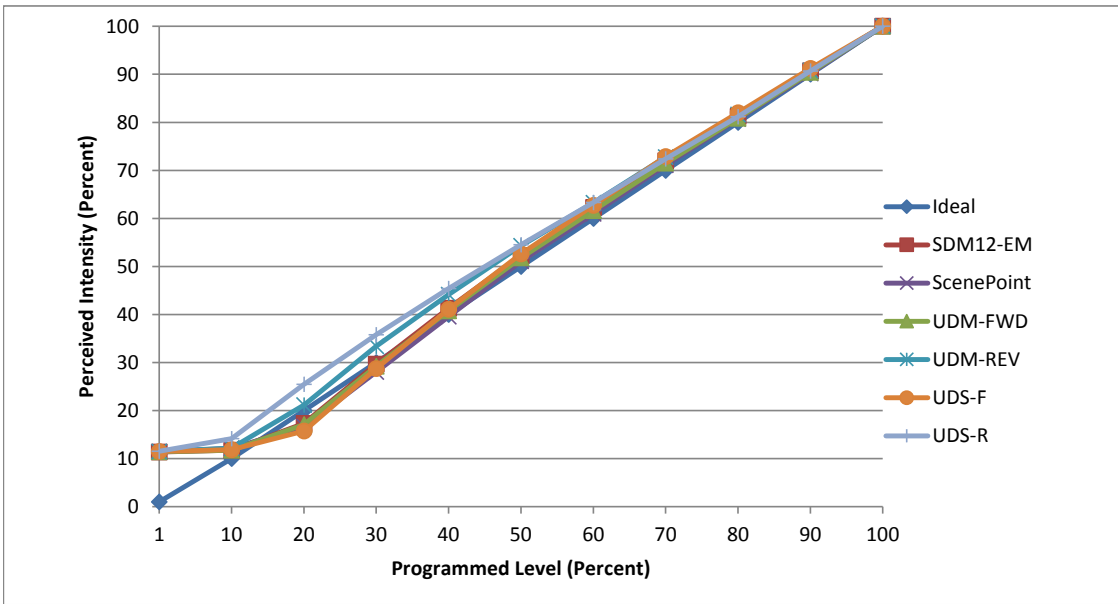


Manufacturer USAI
Model LSLA3-8420-M2-30KS-25-NC1-120V-DIML3
Description 3" 2700K downlight
Driver Lutron Hi-Lume LTEA4U1UK8-EA050 (built-in)
Nominal Power (W) 20
Dimming Control Forward and Reverse Phase
Product Range -
Test Date 14 December, 2018

Dimmer Tested Against:	SDM12-EM	SCP	UDM-FWD	UDM-REV	UDS-F	UDS-R
Pass/Fail	Pass	Pass	Pass	Pass	Pass	Pass
Best-Fit Power Profile:						
Minimum ON	8	10	9	10	10	10
Maximum ON	78.4	80	78.5	78	82.5	72.4
Adjust	-10	-10	-10	0	-30	25
Light Output Range (vs. non-dimmed)						
Maximum (Perceived), 120V	94.9%	95.6%	95.8%	95.4%	95.6%	95.2%
Minimum (Perceived)	10.8%	10.9%	10.9%	11.0%	11.0%	11.0%
Minimum (Measured)	1.2%	1.2%	1.2%	1.2%	1.2%	1.2%

Linearity Curves (Best-fit Power Profile Applied):



Observations: Test performed in single unit configuration.

jwm