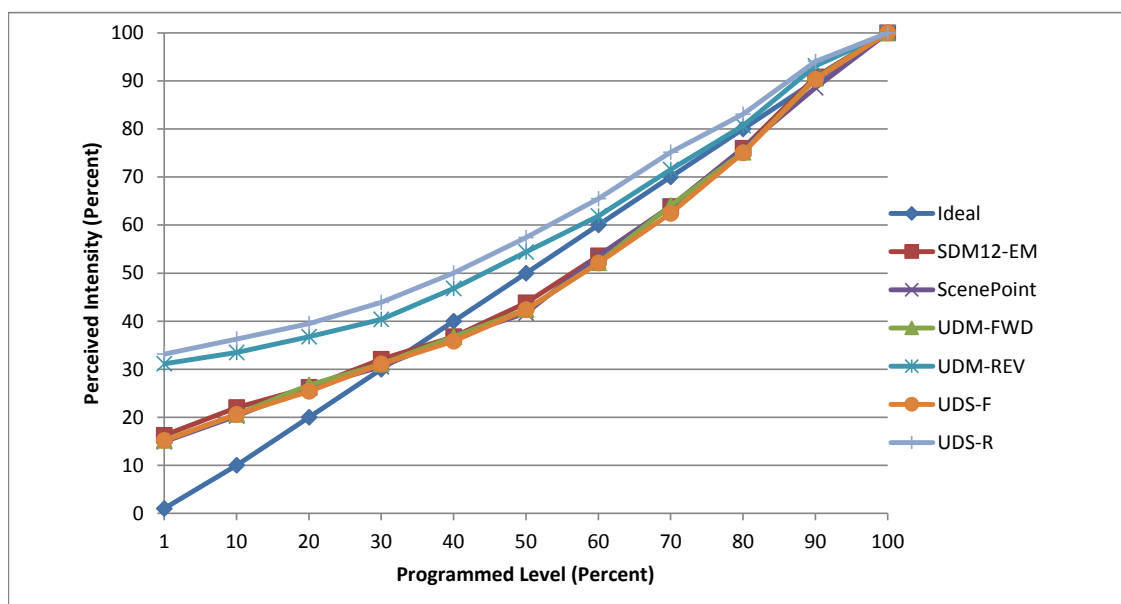


Manufacturer Tech Lighting
Model E3xxx-LHWD4DS
Description 3" high output downlight
Driver L.T.F. DA18W400C2545-3001-1 (built-in)
Nominal Power (W) 17
Dimming Control Forward and Reverse Phase
Product Range Element Citizen Warm Dim
Test Date 19 February, 2020

Dimmer Tested Against:	SDM12-EM	ScenePoint	UDM-FWD	UDM-REV	UDS-F	UDS-R
Commercial Pass/Fail	Pass	Pass	Pass	Pass	Pass	Pass
Residential Pass/Fail	Pass	Pass	Pass	Pass	Pass	Pass
Best-Fit Power Profile:						
Minimum ON	14	16	14	31.5	17	30.5
Maximum ON	87.5	91	82.5	84.7	90.3	81
Adjust	40	38	40	40	40	40
Light Output Range (vs. non-dimmed)						
Maximum (Perceived), 120V	95.4%	95.5%	93.9%	95.0%	93.3%	93.6%
Minimum (Perceived)	15.5%	14.2%	14.2%	29.6%	14.2%	31.0%
Minimum (Measured)	2.4%	2.0%	2.0%	8.7%	2.0%	9.6%

Linearity Curves (Best-fit Power Profile Applied):



jwm

Observations: Element E3RFF-LHWD4D tested in three unit configuration.