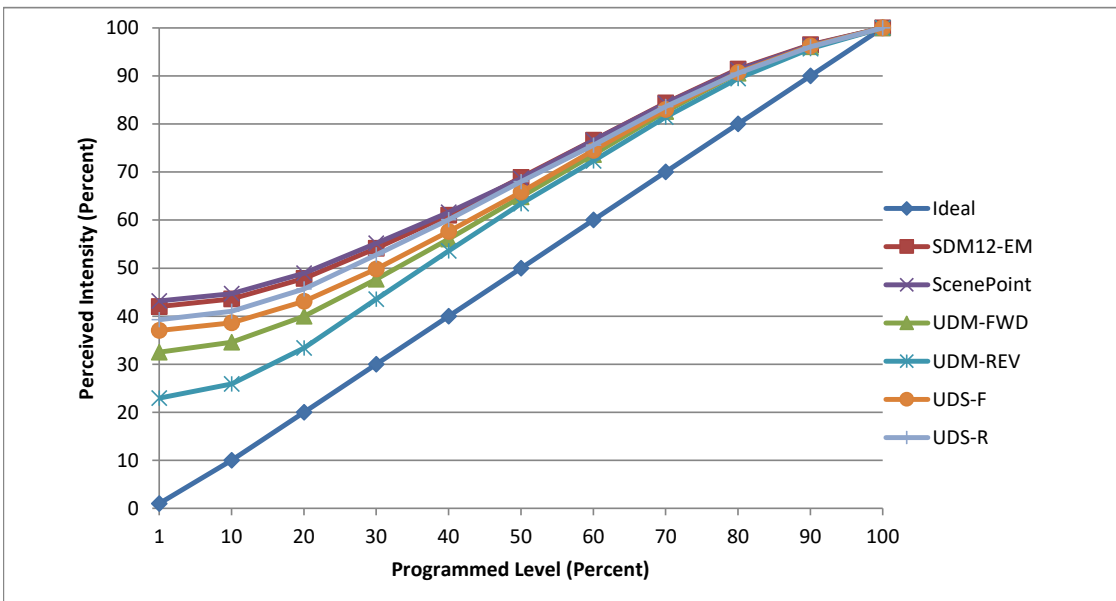


Manufacturer Tech Lighting
Model 351EN3LED3000
Description 3000k LED engine for 3" Entra downlights and wall washes
Driver ERP ESS020W-0450-42
Nominal Power (W) 12
Dimming Control Forward and Reverse Phase
Product Range Entra - LED engine
Test Date 15 January, 2021

Dimmer Tested Against:	SDM12-EM	ScenePoint	UDM-FWD	UDM-REV	UDS-F	UDS-R
Commercial Pass/Fail	Pass	Pass	Pass	Pass	Pass	Pass
Residential Pass/Fail	Pass	Pass	Pass	Pass	Pass	Pass
Best-Fit Power Profile:						
Minimum ON	5	7	2	3	6	5
Maximum ON	37	41	42	43	43	37
Adjust	100	100	100	100	100	100
Light Output Range (vs. non-dimmed)						
Maximum (Perceived), 120V	94.7%	94.8%	95.0%	95.1%	95.5%	94.8%
Minimum (Perceived)	39.8%	40.9%	30.9%	21.8%	35.3%	37.2%
Minimum (Measured)	15.8%	16.8%	9.5%	4.8%	12.5%	13.9%

Linearity Curves (Best-fit Power Profile Applied):



jwm

Observations:

Test performed in three unit configuration.
 Circuit causes HV feedback spike at beginning of waveform,
 roughly 1.5x voltage at wave introduction on SDM12 and ScenePoint.
 Slight flickering noticed at low dim levels.