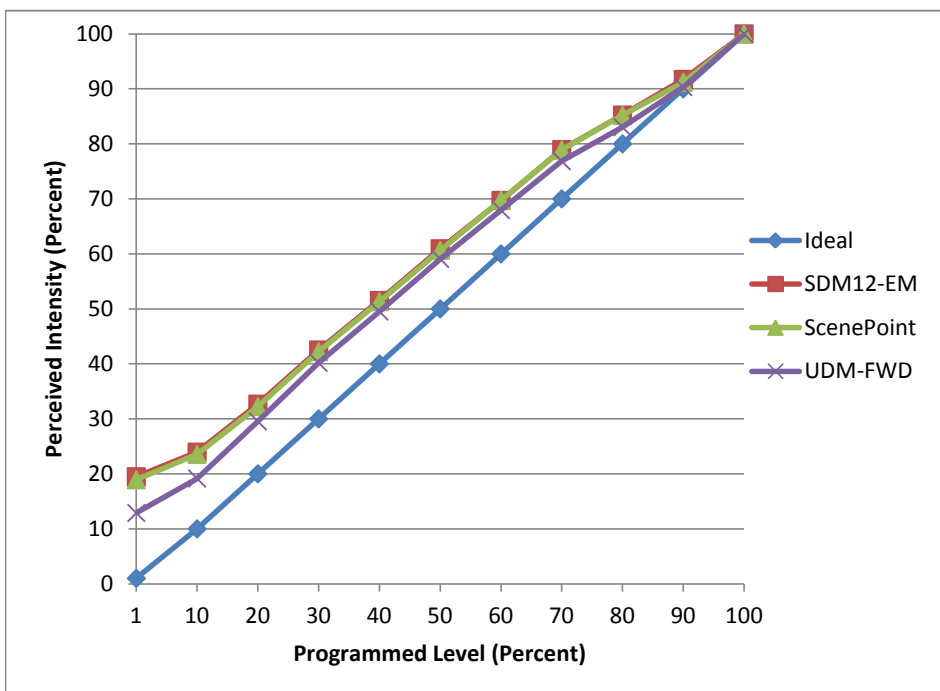


Manufacturer TCP
Model LED712VMR1624KFL
Description MR16
Driver Juno Transformer S201
Nominal Power (W) 7
Dimming Control Forward
Product Range Elite Series
Test Date 10/10/2016

Dimmer Tested Against:	SDM12-EM	ScenePoint	UDM-FWD
Pass/Fail	Pass	Pass	Pass
Best-Fit Power Profile:			
Minimum ON	2	2	1
Maximum ON	92	93	94
Adjust	100	100	100
Light Output Range (vs. non-dimmed)			
Maximum (Perceived)	95.4%	95.3%	95.0%
Minimum (Perceived)	18.6%	18.0%	12.2%
Minimum (Measured)	3.5%	3.2%	1.5%

Linearity Curves (Best-fit Power Profile Applied):



Observations:

Transistional jumps may occur
 Minimum Load issue unable to determine number of lamps
 due to lack of samples
 Slight Buzzing Noise on high end of dimming
 UDM recommended as it eliminates Minimum Load issue
 bgk