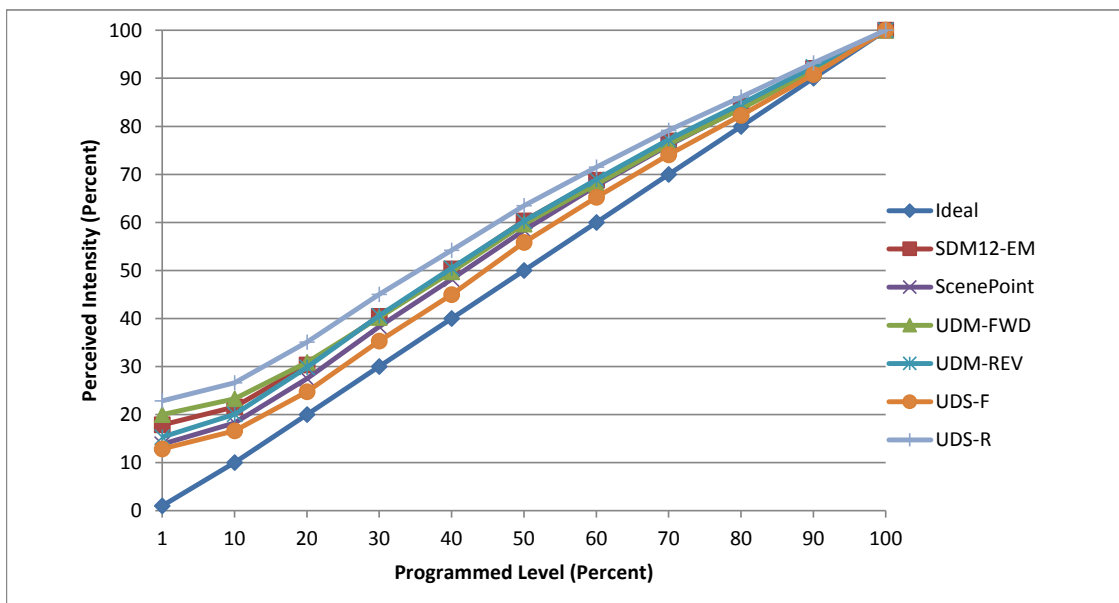


**Manufacturer** Sylvania  
**Model** LED12PAR38  
**Description** 1100 L 3000K PAR 38 bulb  
**Driver** built-in  
**Nominal Power (W)** 12  
**Dimming Control** Forward and Reverse Phase  
**Product Range** High Definition LED  
**Test Date** 19-Jun-19

Dimmer Tested Against:	SDM12-EM	ScenePoint	UDM-FWD	UDM-REV	UDS-F	UDS-R
Pass/Fail	Pas	Pass	Pass	Pass	Pass	Pass
<b>Best-Fit Power Profile:</b>						
Minimum ON	3	3	3.5	3	3.5	3
Maximum ON	75.5	77.5	77.6	74.5	80.5	70
Adjust	100	100	100	100	100	100
<b>Light Output Range (vs. non-dimmed)</b>						
Maximum (Perceived), 120V	95.1%	94.9%	95.1%	95.1%	95.2%	95.2%
Minimum (Perceived)	17.0%	13.1%	19.0%	14.6%	12.2%	21.7%
Minimum (Measured)	2.9%	1.7%	3.6%	2.1%	1.5%	4.7%

Linearity Curves (Best-fit Power Profile Applied):



jwm

**Observations:** Test performed in five unit configuration.