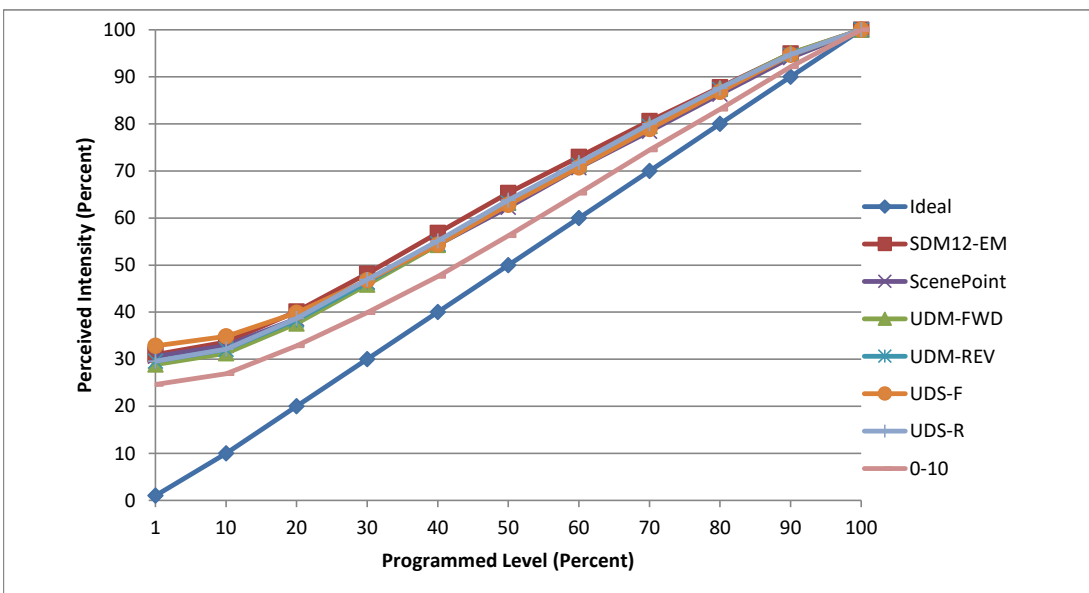


Manufacturer Specialty Lighting Industries
Model GRO-xx-CZ14-F-30-NF-C1-C2-xx-xx
Description Specialty products with C (citizen) source and C1/C2 driver selection
Driver ESS015-0350
Nominal Power (W) 14.7
Dimming Control Forward, Reverse, and 0-10
Product Range Specialty Lighting product families - Core, Scope, Rivet, Graffiti, Jazz
Test Date 2 February, 2023

Dimmer Tested Against:	SDM12-EM	ScenePoint	UDM-FWD	UDM-REV	UDS-F	UDS-R	0-10
Commercial Pass/Fail	Pass	Pass	Pass	Pass	Pass	Pass	Pass
Residential Pass/Fail	Pass	Pass	Pass	Pass	Pass	Pass	Pass
Best-Fit Power Profile:							
Minimum ON	4	6.5	5.3	5.5	7.5	5	0.5
Maximum ON	62.3	70	66.5	67.5	69	64.2	7.49
Adjust	100	100	100	100	100	100	100
Light Output Range (vs. non-dimmed)							
Maximum (Perceived), 120V	94.8%	95.1%	95.2%	95.2%	95.0%	94.9%	94.9%
Minimum (Perceived)	29.4%	29.1%	27.5%	28.2%	31.2%	28.1%	23.4%
Minimum (Measured)	8.6%	8.5%	7.5%	7.9%	9.7%	7.9%	5.5%

Linearity Curves (Best-fit Power Profile Applied):



jwm

Observations: Test performed in five unit configuration.