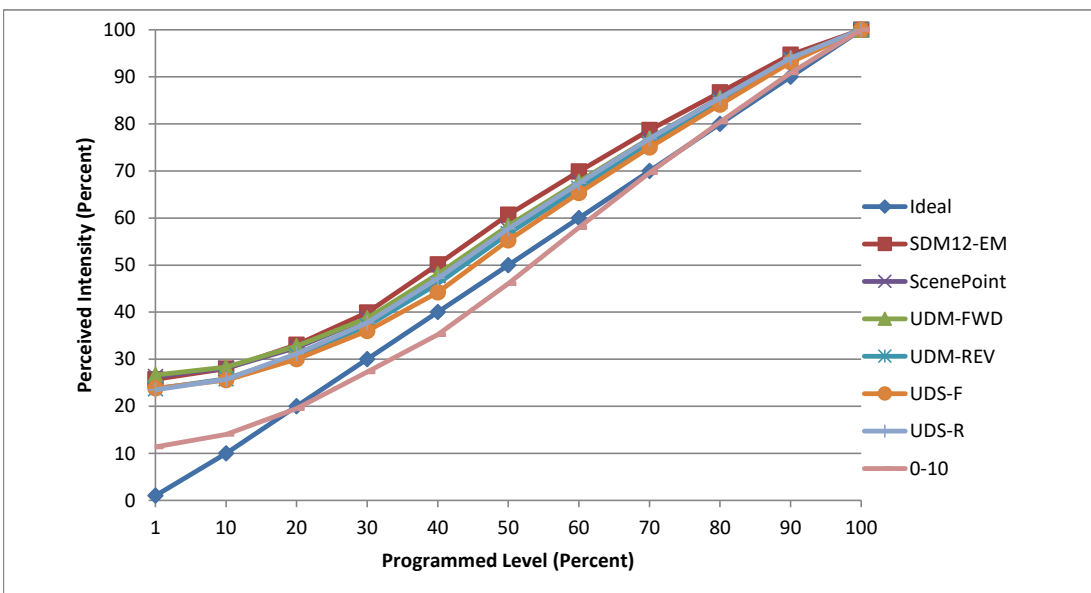


**Manufacturer** Specialty Lighting Industries  
**Model** GRO-xx-AD14-F-30-NF-C1-C2-xx-xx  
**Description** Specialty products with A (Ambient Dim) source and C1/C2 driver selection  
**Driver** ESS015-0350  
**Nominal Power (W)** 14.7  
**Dimming Control** Forward, Reverse, and 0-10  
**Product Range** Specialty Lighting product families - Core, Scope, Rivet, Graffiti, Jazz  
**Test Date** 2 February, 2023

Dimmer Tested Against:	SDM12-EM	ScenePoint	UDM-FWD	UDM-REV	UDS-F	UDS-R	0-10
Commercial Pass/Fail	Pass	Pass	Pass	Pass	Pass	Pass	Pass
Residential Pass/Fail	Pass	Pass	Pass	Pass	Pass	Pass	Pass
<b>Best-Fit Power Profile:</b>							
Minimum ON	3.7	6.5	5.7	6	7.3	5	0.2
Maximum ON	61	67.5	65.4	67	69	64.5	7.83
Adjust	100	100	100	100	100	100	100
<b>Light Output Range (vs. non-dimmed)</b>							
Maximum (Perceived), 120V	95.1%	95.2%	94.8%	94.9%	94.9%	95.1%	95.0%
Minimum (Perceived)	24.5%	25.0%	25.3%	22.5%	22.6%	22.4%	10.8%
Minimum (Measured)	6.0%	6.3%	6.4%	5.1%	5.1%	5.0%	1.2%

Linearity Curves (Best-fit Power Profile Applied):



jwm

**Observations:** Test performed in five unit configuration.