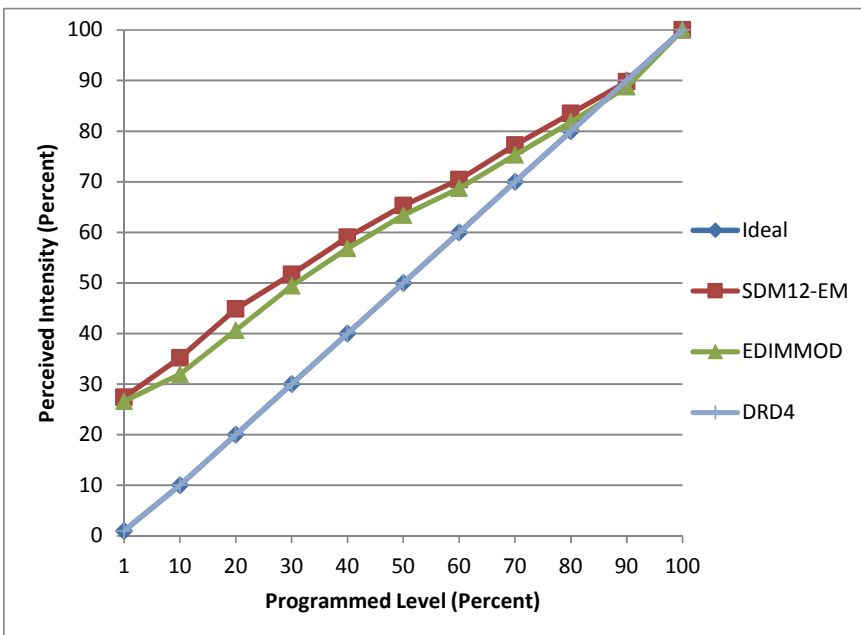


Manufacturer Soraa
Model MR16-36-B01-12-927-25
Description MR16 GU5.3 lv LED lamp
Driver integrated. Lightech LET 75 transformer (two per transformer)
Nominal Power (W) 8
Dimming Control forward- and reverse-phase
Product Range Vivid
Test Date 12/19/2014

Dimmer Tested Against:	SDM12-EM	EDIMMOD	
Pass/Fail	Pass	Pass	
Best-Fit Power Profile:			
Minimum ON	2	1.5	
Maximum ON	95	97	
Adjust	10		
Light Output Range (vs. non-dimmed)			
Maximum (Perceived)	96.0%	95.2%	
Minimum (Perceived)	26.3%	25.4%	
Minimum (Measured)	6.9%	6.4%	

Linearity Curves (Best-fit Power Profile Applied):



Observations: