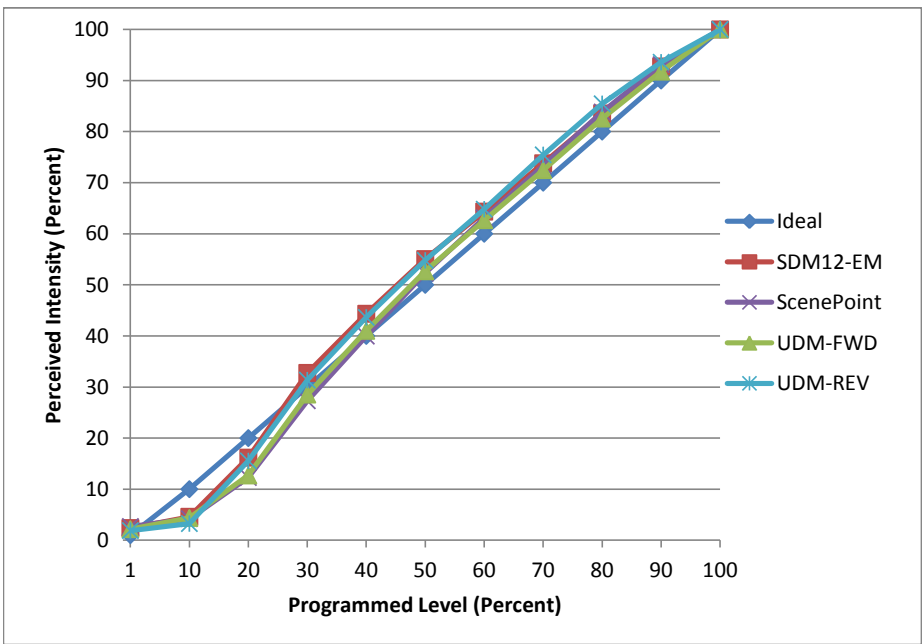


Manufacturer Solais
Model LR30LN-25-30K-2050-WH
Description LR30 Lamp
Driver Integrated
Nominal Power (W) 24
Dimming Control Forward and Reverse
Product Range -
Test Date 11/8/2016

Dimmer Tested Against:	SDM12-EM	Scenepoint	UDM-FWD	UDM-REV
Pass/Fail	Pass	Pass	Pass	Pass
Best-Fit Power Profile:				
Minimum ON	1	2	1	1
Maximum ON	64	67	65	64
Adjust	30	25	25	20
Light Output Range (vs. non-dimmed)				
Maximum (Perceived)	95.1%	95.1%	95.8%	95.7%
Minimum (Perceived)	2.3%	2.6%	2.1%	1.8%
Minimum (Measured)	0.1%	0.1%	0.04%	0.03%

Linearity Curves (Best-fit Power Profile Applied):



Observations:

bgk