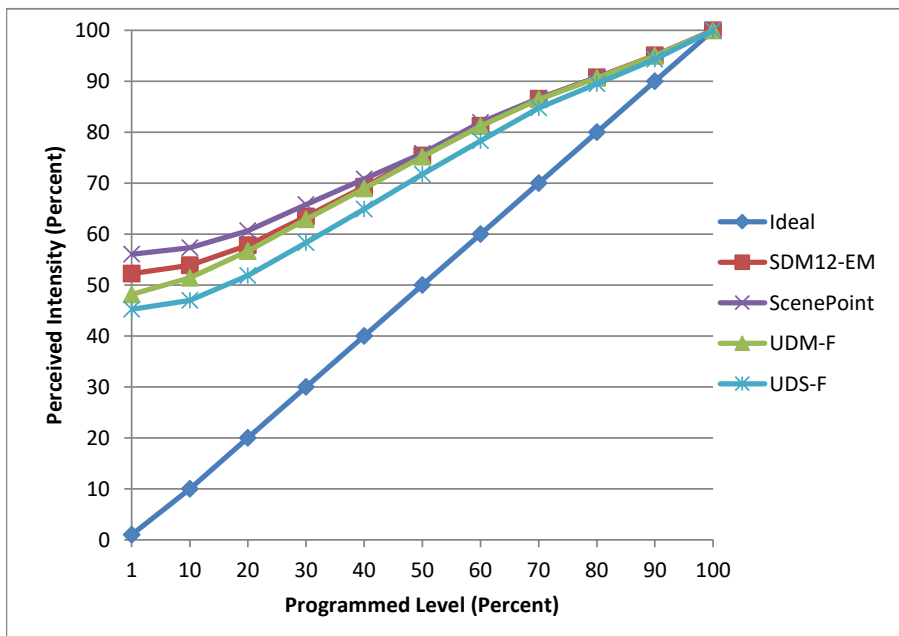


Manufacturer Quality Light Source
Model LGU10D5027xx
Description 6 watt 500 lumen GU10 bulb
Driver built-in
Nominal Power (W) 6
Dimming Control Forward
Product Range -
Test Date 16 Oct, 2019

Dimmer Tested Against:	SDM12-EM	ScenePoint	UDM-F	UDS-F
Commercial Pass/Fail	Pass	Pass	Pass	Pass
Residential Pass/Fail	Pass	Pass	Pass	Pass
Best-Fit Power Profile:				
Minimum ON	10	14	9	10
Maximum ON	86.5	89	89	90.5
Adjust	100	100	100	100
Light Output Range (vs. non-dimmed)				
Maximum (Perceived), 120V	94.9%	94.8%	95.1%	95.0%
Minimum (Perceived)	49.6%	53.2%	45.8%	43.0%
Minimum (Measured)	24.6%	28.3%	21.0%	18.5%

Linearity Curves (Best-fit Power Profile Applied):



jwm

Observations: Test performed in four unit configuration.