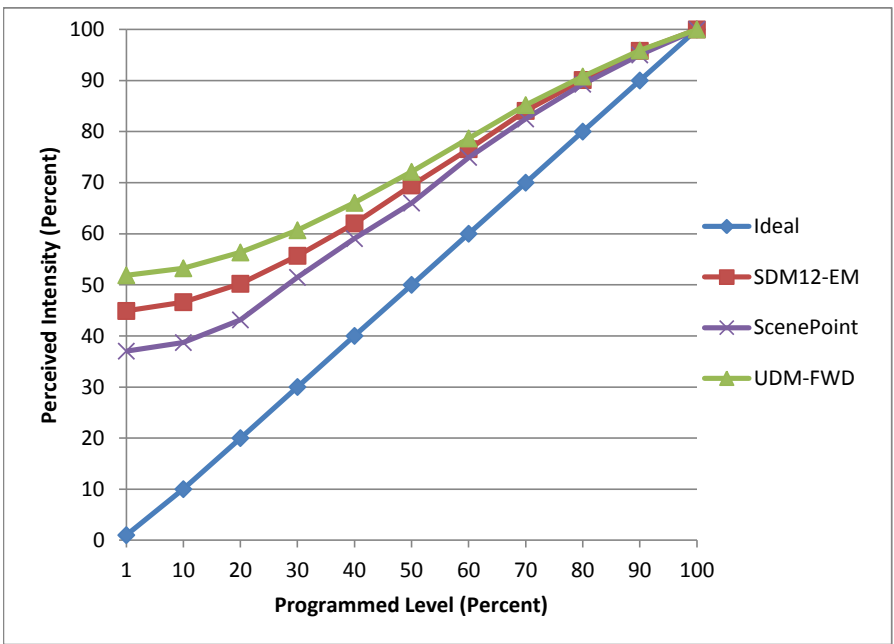


**Manufacturer** Premier  
**Model** LED6MR16G3 D 30 ES  
**Description** MR16 Lamp  
**Driver** Juno IC44N  
**Nominal Power (W)** 6  
**Dimming Control** Forward and Reverse  
**Product Range** -  
**Test Date** 7/7/2016

Dimmer Tested Against:	SDM12-EM	ScenePoint	UDM-FWD
Pass/Fail	Pass	Pass	Pass
<b>Best-Fit Power Profile:</b>			
Minimum ON	17	17	20
Maximum ON	34	34	33
Adjust	100	100	100
<b>Light Output Range (vs. non-dimmed)</b>			
Maximum (Perceived)	95.7%	95.0%	95.1%
Minimum (Perceived)	43.0%	35.2%	49.3%
Minimum (Measured)	18.5%	12.4%	24.3%

Linearity Curves (Best-fit Power Profile Applied):



Observations:

bgk