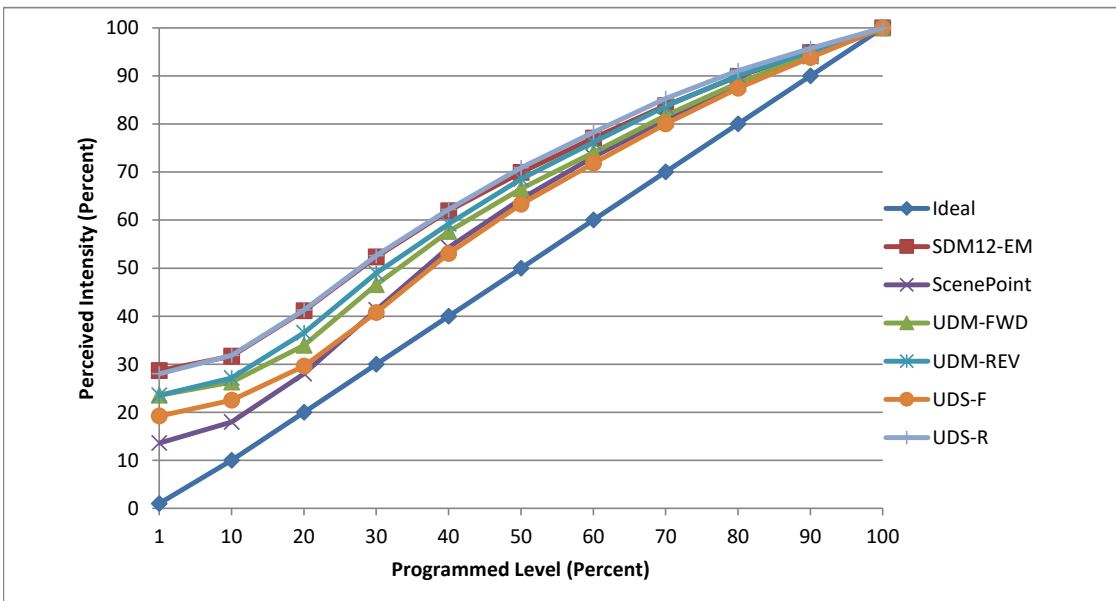


Manufacturer Nora Lighting
Model NOXTW-56xxxx
Description 5"/6" Onyx Tunable White LED Retrofit
Driver built-in
Nominal Power (W) 15.5
Dimming Control Forward and Reverse
Product Range Selectable CCT
Test Date 22 November, 2022

Dimmer Tested Against:	SDM12-EM	ScenePoint	UDM-FWD	UDM-REV	UDS-F	UDS-R
Commercial Pass/Fail	Pass	Pass	Pass	Pass	Pass	Pass
Residential Pass/Fail	Pass	Pass	Pass	Pass	Pass	Pass
Best-Fit Power Profile:						
Minimum ON	4	3	4	4	3.8	3.5
Maximum ON	82.5	87.5	86.5	83.3	88.8	81.5
Adjust	100	100	100	100	100	100
Light Output Range (vs. non-dimmed)						
Maximum (Perceived), 120V	94.9%	95.1%	95.1%	95.1%	94.9%	94.9%
Minimum (Perceived)	27.2%	12.9%	22.4%	22.4%	18.2%	26.6%
Minimum (Measured)	7.4%	1.7%	5.0%	5.0%	3.3%	7.1%

Linearity Curves (Best-fit Power Profile Applied):



jwm

Observations: Test performed in three unit configuration.
 Test performed with all units set for 3500K color temperature.