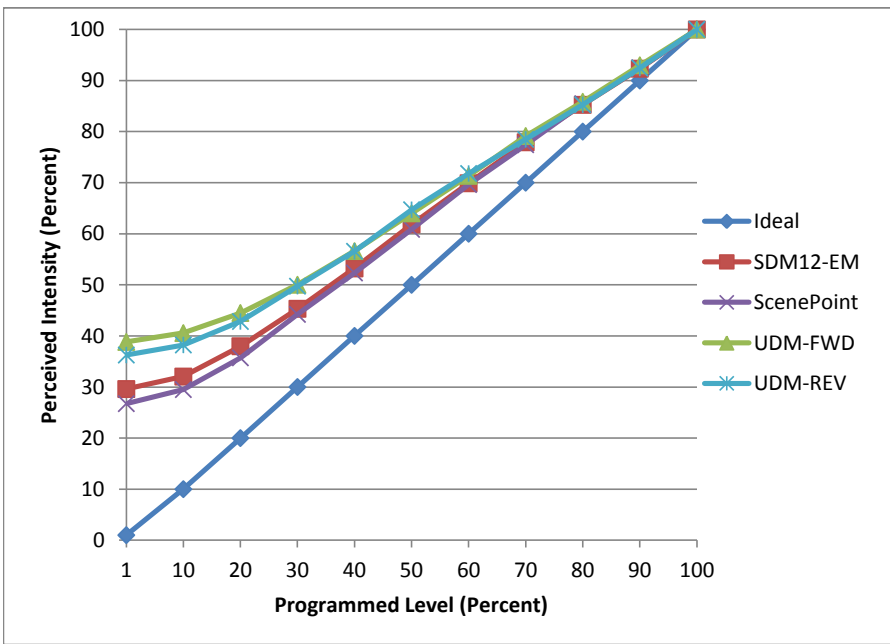


Manufacturer Nora
Model NLCBC-452D30
Description 4 in Recessed
Driver Integrated
Nominal Power (W) 16
Dimming Control Forward and Reverse
Product Range -
Test Date 6/21/2016

Dimmer Tested Against:	SDM12-EM	ScenePoint	UDM-FWD	UDM-REV
Pass/Fail	Pass	Pass	Pass	Pass
Best-Fit Power Profile:				
Minimum ON	5	5	9	7
Maximum ON	70	74	73	70
Adjust	100	100	100	100
Light Output Range (vs. non-dimmed)				
Maximum (Perceived)	95.6%	95.8%	95.7%	95.6%
Minimum (Perceived)	28.3%	25.6%	37.2%	34.7%
Minimum (Measured)	8.0%	6.6%	13.8%	12.0%

Linearity Curves (Best-fit Power Profile Applied):



Observations:

bgk