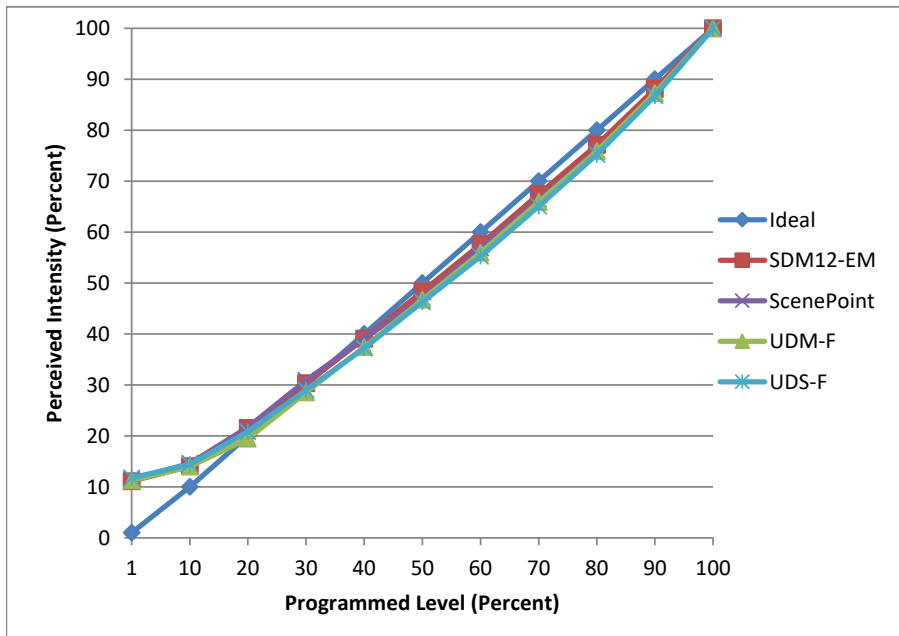


**Manufacturer** No8  
**Model** 200-HD-IC  
**Description** 2" downlights  
**Driver** LU1-2-HD-IC  
**Nominal Power (W)** 18  
**Dimming Control** Forward  
**Product Range** 200-HD-IC Series  
**Test Date** 10 January, 2023

Dimmer Tested Against:	SDM12-EM	ScenePoint	UDM-F	UDS-F
<b>Commercial Pass/Fail</b>	Pass	Pass	Pass	Pass
<b>Residential Pass/Fail</b>	Pass	Pass	Pass	Pass
<b>Best-Fit Power Profile:</b>				
<b>Minimum ON</b>	16.25	22	19.25	23.25
<b>Maximum ON</b>	71.5	77.25	75	-
<b>Adjust</b>	100	100	100	100
<b>Light Output Range (vs. non-dimmed)</b>				
<b>Maximum (Perceived), 120V</b>	95.4%	94.9%	94.8%	95.1%
<b>Minimum (Perceived)</b>	10.6%	10.9%	10.7%	11.2%
<b>Minimum (Measured)</b>	1.1%	1.2%	1.1%	1.3%

**Linearity Curves (Best-fit Power Profile Applied):**



jwm

**Observations:** Test performed in four unit configuration.