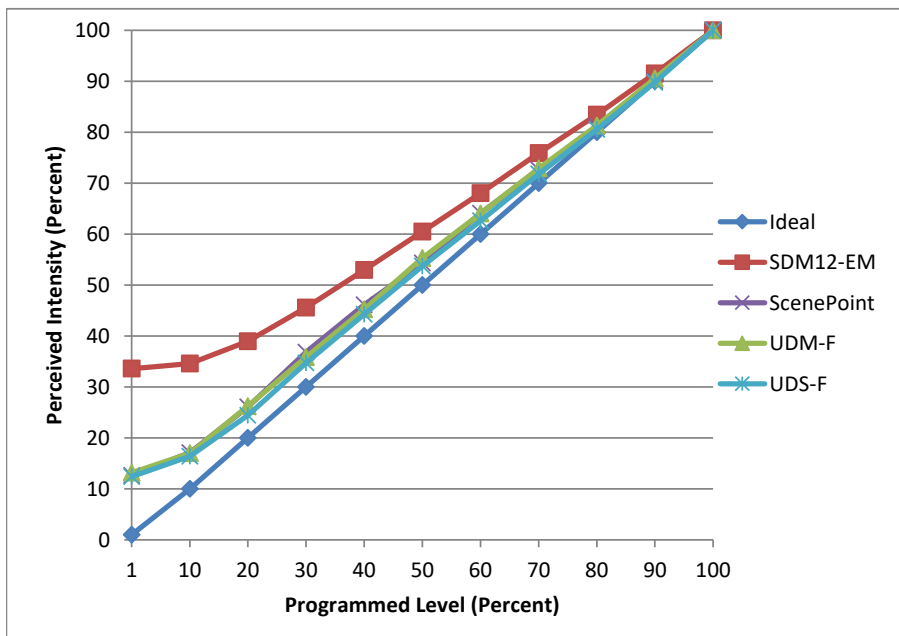


Manufacturer No8
Model 200-HD-IC
Description 2" LED lights
Driver LU1-2-HD (one per fixture)
Nominal Power (W) 26
Dimming Control Forward
Product Range 200-HD Series
Test Date 10 January, 2023

Dimmer Tested Against:	SDM12-EM	ScenePoint	UDM-F	UDS-F
Commercial Pass/Fail	Pass	Pass	Pass	Pass
Residential Pass/Fail	Pass	Pass	Pass	Pass
Best-Fit Power Profile:				
Minimum ON	20	20.75	19	22.2
Maximum ON	68.5	74.5	72.5	75
Adjust	100	100	100	100
Light Output Range (vs. non-dimmed)				
Maximum (Perceived), 120V	95.3%	95.3%	94.6%	94.9%
Minimum (Perceived)	32.0%	12.0%	12.5%	11.8%
Minimum (Measured)	10.3%	1.4%	1.6%	1.4%

Linearity Curves (Best-fit Power Profile Applied):



jwm

Observations: Test performed in four unit configuration.