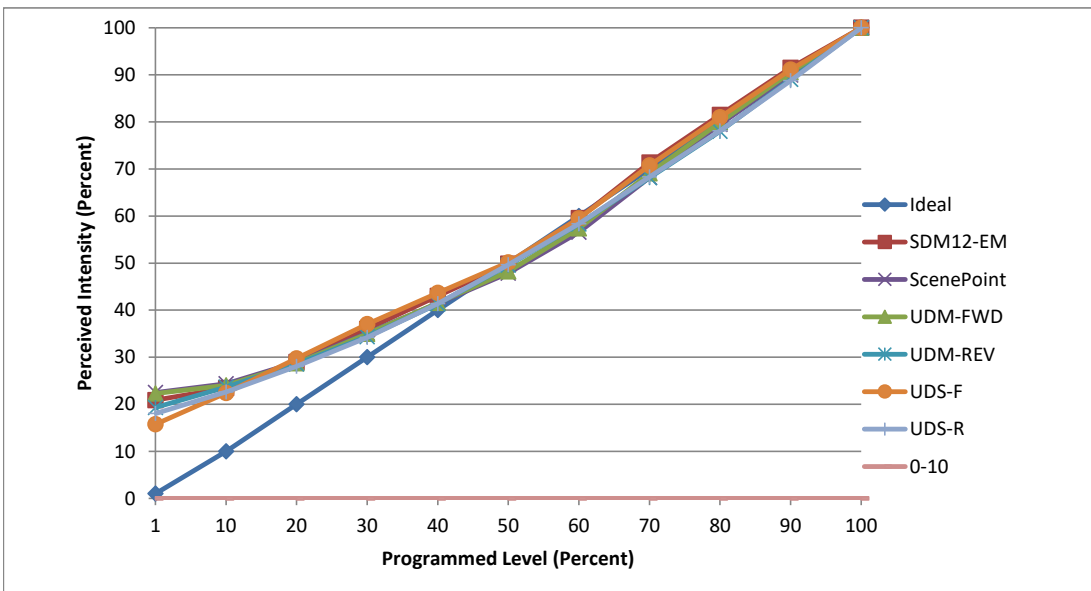


Manufacturer No8
Model 200-HD
Description 2" LED downlights
Driver DIM1-2-HD (one per fixture)
Nominal Power (W) 26
Dimming Control Forward, Reverse, and 0-10
Product Range 200-HD Series
Test Date 11 January, 2023

Dimmer Tested Against:	SDM12-EM	ScenePoint	UDM-FWD	UDM-REV	UDS-F	UDS-R	0-10
Commercial Pass/Fail	Pass	Pass	Pass	Pass	Pass	Pass	Fail
Residential Pass/Fail	Pass	Pass	Pass	Pass	Pass	Pass	Fail
Best-Fit Power Profile:							
Minimum ON	3	6	4.5	16	4	12	N/A
Maximum ON	71.4	77.4	76	82.25	79.7	81.5	N/A
Adjust	100	100	100	40	70	40	N/A
Light Output Range (vs. non-dimmed)							
Maximum (Perceived), 120V	94.7%	94.8%	95.1%	95.0%	95.2%	94.8%	0.0%
Minimum (Perceived)	19.8%	21.3%	21.2%	18.3%	15.0%	17.1%	0.0%
Minimum (Measured)	3.9%	4.5%	4.5%	3.4%	2.2%	2.9%	0.0%

Linearity Curves (Best-fit Power Profile Applied):



jwm

Observations: Test performed in four unit configuration.
 Unit failed 0-10 because of intense flicker in mid-range (~60-40%) dim.