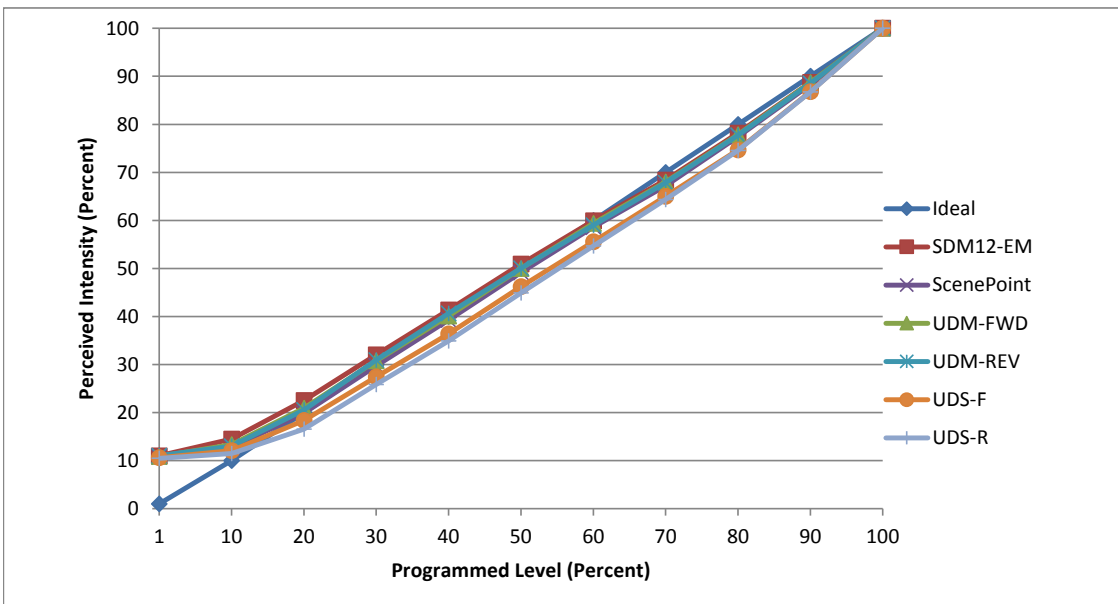


Manufacturer Meteor
Model CSM10-85W-30K-UNV-60-BLK-TRIAC
Description large 85 watt 30k temp black can LED
Driver 2x Lutron Hi-Lume LTEA4U1UKN-LA110 (included by manufacturer)
Nominal Power (W) 85
Dimming Control Forward and Reverse Phase (advertised as Forward)
Product Range -
Test Date 6-Jun-18

| Dimmer Tested Against: | SDM12-EM | SCP | UDM-FWD | UDM-REV | UDS-F | UDS-R |
|--|----------|-------|---------|---------|-------|-------|
| Pass/Fail | Pass | Pass | Pass | Pass | Pass | Pass |
| Best-Fit Power Profile: | | | | | | |
| Minimum ON | 20 | 20 | 20 | 15 | 24 | 23 |
| Maximum ON | 82 | 82 | 80 | 84 | 85 | 86 |
| Adjust | 0 | 0 | 0 | 0 | 0 | 0 |
| Light Output Range (vs. non-dimmed) | | | | | | |
| Maximum (Perceived), 120V | 96.4% | 96.2% | 94.3% | 94.4% | 96.2% | 96.9% |
| Minimum (Perceived) | 10.6% | 10.4% | 10.3% | 10.4% | 10.2% | 10.1% |
| Minimum (Measured) | 1.1% | 1.1% | 1.1% | 1.1% | 1.0% | 1.0% |

Linearity Curves (Best-fit Power Profile Applied):



Observations: Tests performed with single fixture.
 Fixture required warm-up time for consistent results.

jwm