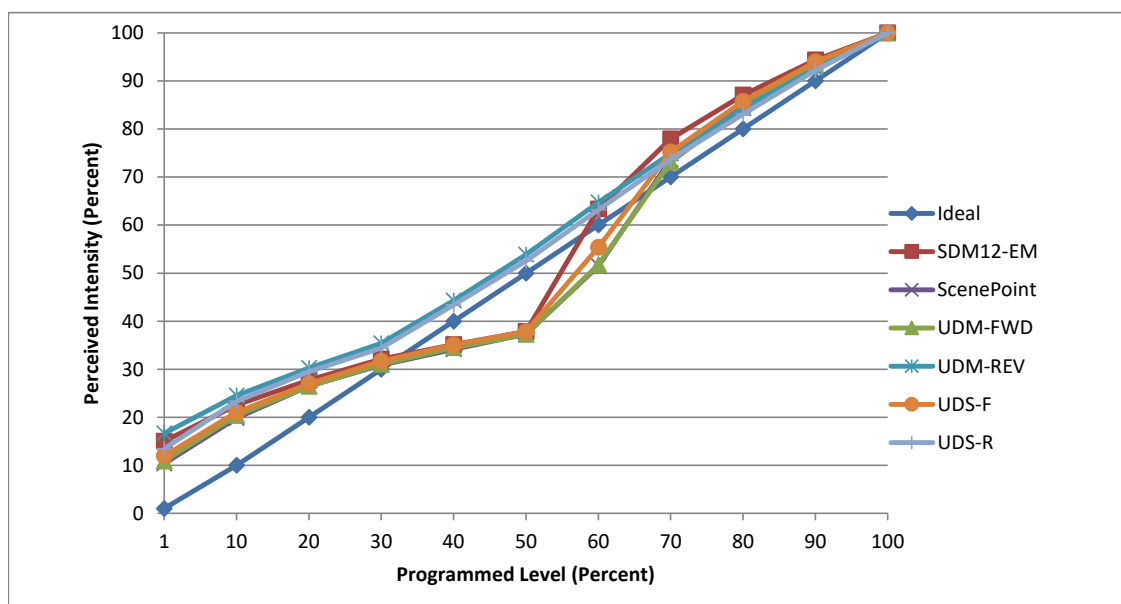


**Manufacturer** Lucifer Lighting Company  
**Model** Fraxion4 fixed  
**Description** 4" downlight, 3000K 984 L  
**Driver** Signify Advance XI020C050V042RNP2 built-in  
**Nominal Power (W)** 14  
**Dimming Control** Forward and Reverse Phase  
**Product Range** Fraxion4 fixed  
**Test Date** 14 September, 2021

Dimmer Tested Against:	SDM12-EM	ScenePoint	UDM-FWD	UDM-REV	UDS-F	UDS-R
<b>Commercial Pass/Fail</b>	Pass	Pass	Pass	Pass	Pass	Pass
<b>Residential Pass/Fail</b>	Pass	Pass	Pass	Pass	Pass	Pass
<b>Best-Fit Power Profile:</b>						
Minimum ON	7	6	6	7	8	5
Maximum ON	53.5	60	58.5	53.5	61.4	53
Adjust	-35	-37	-30	-10	-40	0
<b>Light Output Range (vs. non-dimmed)</b>						
Maximum (Perceived), 120V	95.3%	94.9%	95.4%	94.6%	95.0%	94.5%
Minimum (Perceived)	14.3%	9.8%	10.4%	15.7%	11.4%	12.7%
Minimum (Measured)	2.0%	1.0%	1.1%	2.5%	1.3%	1.6%

Linearity Curves (Best-fit Power Profile Applied):



jwm

**Observations:** Part number tested is: F4RFFS1-WHWH-90C14A30-40RM1-TR204  
 Test performed in three unit configuration.  
 Peak output intensity seems to happen ~65% dim level.  
 All forward-phase dimmers showed massive step at mid-dim level.