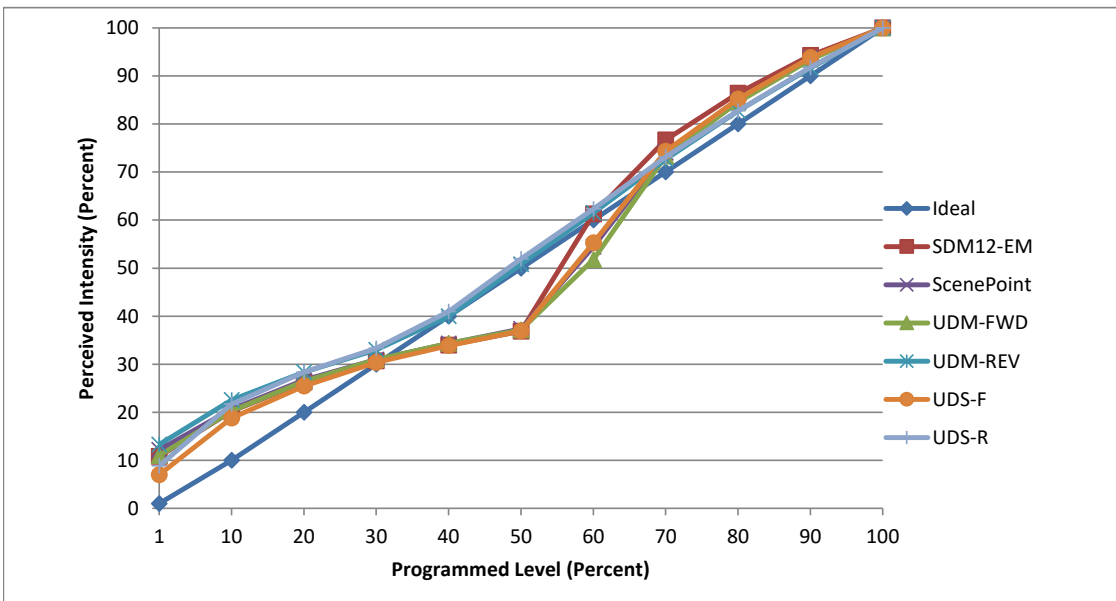


Manufacturer Lucifer Lighting Company
Model Fraxion3 Slim
Description 3" downlight, 3000K 936 L
Driver Signify Advance XI020C050V042RNP2 built-in
Nominal Power (W) 14
Dimming Control Forward and Reverse Phase
Product Range Fraxion
Test Date 14 September, 2021

Dimmer Tested Against:	SDM12-EM	ScenePoint	UDM-FWD	UDM-REV	UDS-F	UDS-R
Commercial Pass/Fail	Pass	Pass	Pass	Pass	Pass	Pass
Residential Pass/Fail	Pass	Pass	Pass	Pass	Pass	Pass
Best-Fit Power Profile:						
Minimum ON	5	7	6	5.5	6	4
Maximum ON	54.5	58.5	58.3	55.5	61.5	55
Adjust	-35	-37	-33	0	-40	0
Light Output Range (vs. non-dimmed)						
Maximum (Perceived), 120V	95.6%	95.1%	94.7%	95.6%	95.7%	95.0%
Minimum (Perceived)	10.3%	11.6%	10.4%	12.7%	6.7%	8.4%
Minimum (Measured)	1.1%	1.3%	1.1%	1.6%	0.4%	0.7%

Linearity Curves (Best-fit Power Profile Applied):



jwm

Observations: Part number tested is: F3RM1F-WHWH-90C14A30-40X1-PH
 Test performed in three unit configuration.
 Peak output intensity seems to happen ~65% dim level.
 All forward-phase dimmers showed massive step at mid-dim level.