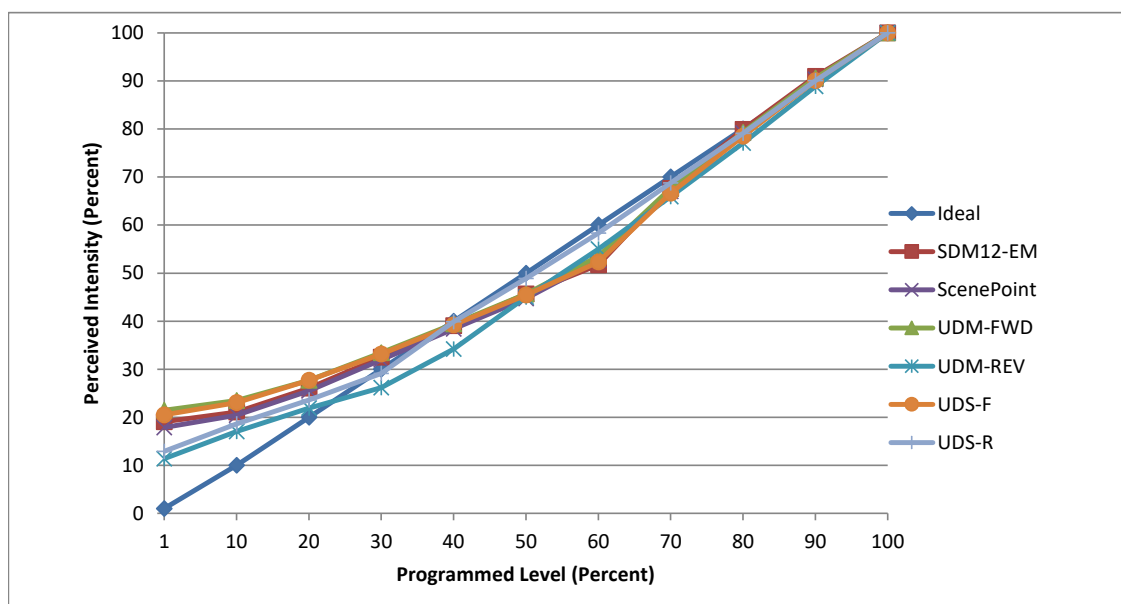


**Manufacturer** Lucifer Lighting Company  
**Model** Cylinder1  
**Description** surface mount cylinder, 3000K 1039 L  
**Driver** unknown, built-in  
**Nominal Power (W)** 17  
**Dimming Control** Forward and Reverse Phase  
**Product Range** Cylinder  
**Test Date** 16 September, 2021

Dimmer Tested Against:	SDM12-EM	ScenePoint	UDM-FWD	UDM-REV	UDS-F	UDS-R
<b>Commercial Pass/Fail</b>	Pass	Pass	Pass	Pass	Pass	Pass
<b>Residential Pass/Fail</b>	Pass	Pass	Pass	Pass	Pass	Pass
<b>Best-Fit Power Profile:</b>						
Minimum ON	4	5	5.5	6.5	6.5	7
Maximum ON	71.3	76	74.5	82.4	77.3	79.5
Adjust	100	95	96	25	90	23
<b>Light Output Range (vs. non-dimmed)</b>						
Maximum (Perceived), 120V	94.8%	95.0%	95.1%	95.0%	94.7%	94.8%
Minimum (Perceived)	18.1%	17.0%	20.4%	10.8%	19.4%	12.2%
Minimum (Measured)	3.3%	2.9%	4.2%	1.2%	3.8%	1.5%

Linearity Curves (Best-fit Power Profile Applied):



jwm

**Observations:** Part number tested is: CY1AD1WHBK90C15A3040CE24JBMP  
 Test performed in three unit configuration.