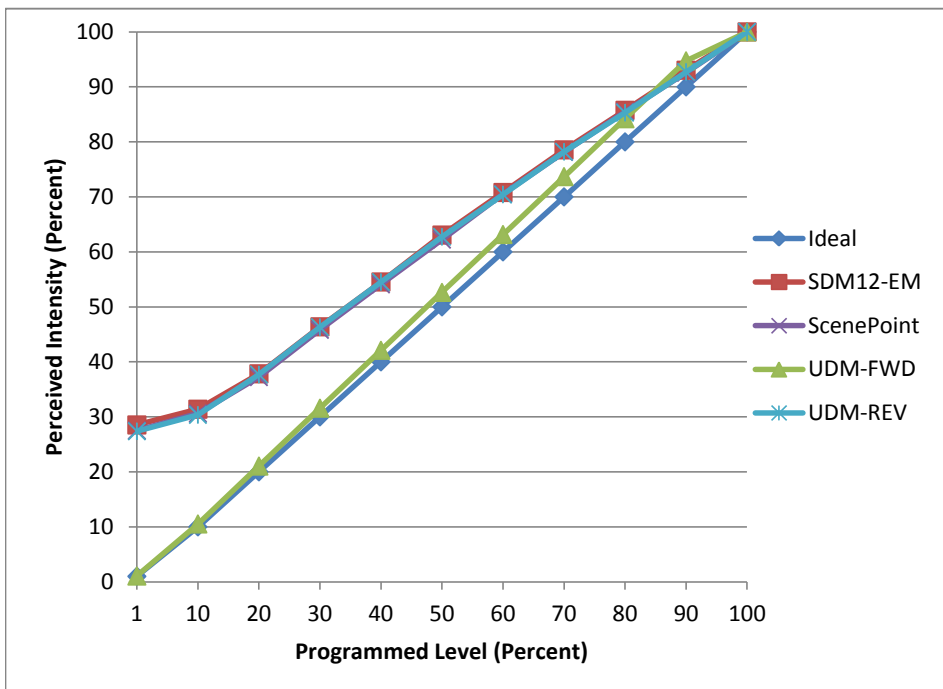


Manufacturer Liteline
Model SA-S2500-30K-40
Description 2" Downlight
Driver ERP EBR020U-0500-42
Nominal Power (W) 16
Dimming Control Forward and Reverse
Product Range Sigma 2
Test Date 9/2/2016

Dimmer Tested Against:	SDM12-EM	ScenePoint	UDM-FWD	UDM-REV
Pass/Fail	Pass	Pass	Fail	Pass
Best-Fit Power Profile:				
Minimum ON	4	4	-	4
Maximum ON	77	79	-	77
Adjust	100	100	-	100
Light Output Range (vs. non-dimmed)				
Maximum (Perceived)	95.2%	95.3%	95.0%	95.2%
Minimum (Perceived)	27.1%	26.2%	1.0%	26.1%
Minimum (Measured)	7.4%	6.9%	0.0%	6.8%

Linearity Curves (Best-fit Power Profile Applied):



Observations:

Turn on is slow and determines the low end value. Can turn on at 1.5 but with a longer turn on time. UDM -FWD Turns off while dimming up at 50 while dimming down will turn off at 75.

bgk