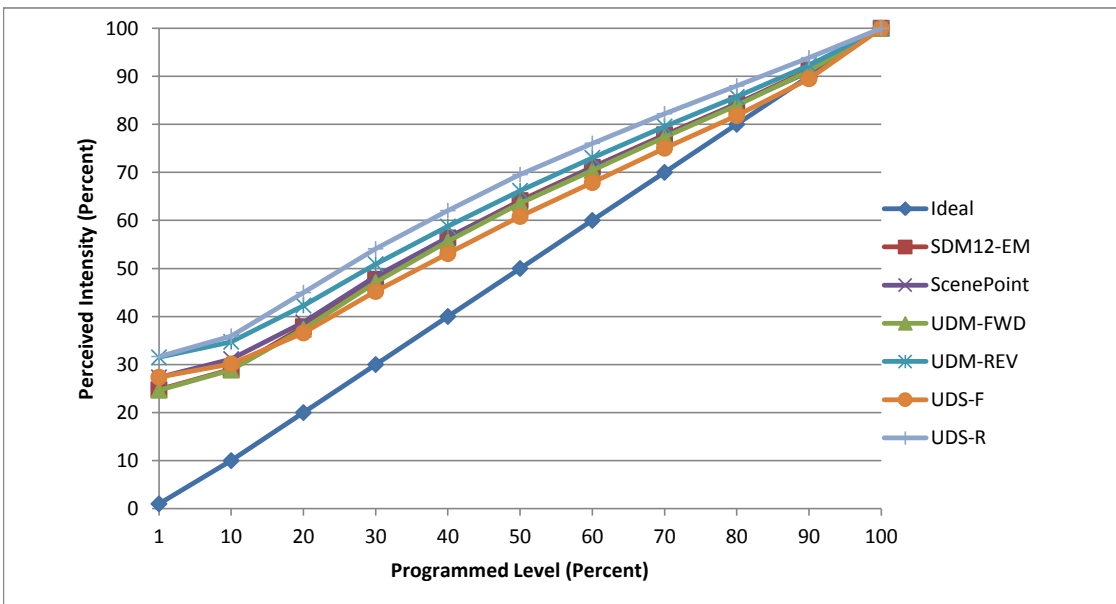


**Manufacturer** Lighting Spot 26  
**Model** LSL4 49930SQ  
**Description** 4 in Retrofit recessed  
**Driver** Integrated  
**Nominal Power (W)** 10  
**Dimming Control** Forward and Reverse Phase  
**Product Range** -  
**Test Date** 11/8/2017

Dimmer Tested Against:	SDM12-EM	SCP	UDM-FWD	UDM-REV	UDS-F	UDS-R
Pass/Fail	Pass	Pass	Pass	Pass	Pass	Pass
<b>Best-Fit Power Profile:</b>						
Minimum ON	3	4	3	5	6	3
Maximum ON	92	94	93	92	96	87
Adjust	100	100	100	100	100	100
<b>Light Output Range (vs. non-dimmed)</b>						
Maximum (Perceived), 120V	95.1%	95.5%	95.3%	95.3%	95.6%	95.0%
Minimum (Perceived)	23.6%	26.1%	23.5%	30.0%	26.2%	30.1%
Minimum (Measured)	5.6%	6.8%	5.5%	9.0%	6.8%	9.0%

Linearity Curves (Best-fit Power Profile Applied):



**Observations:**

bgk