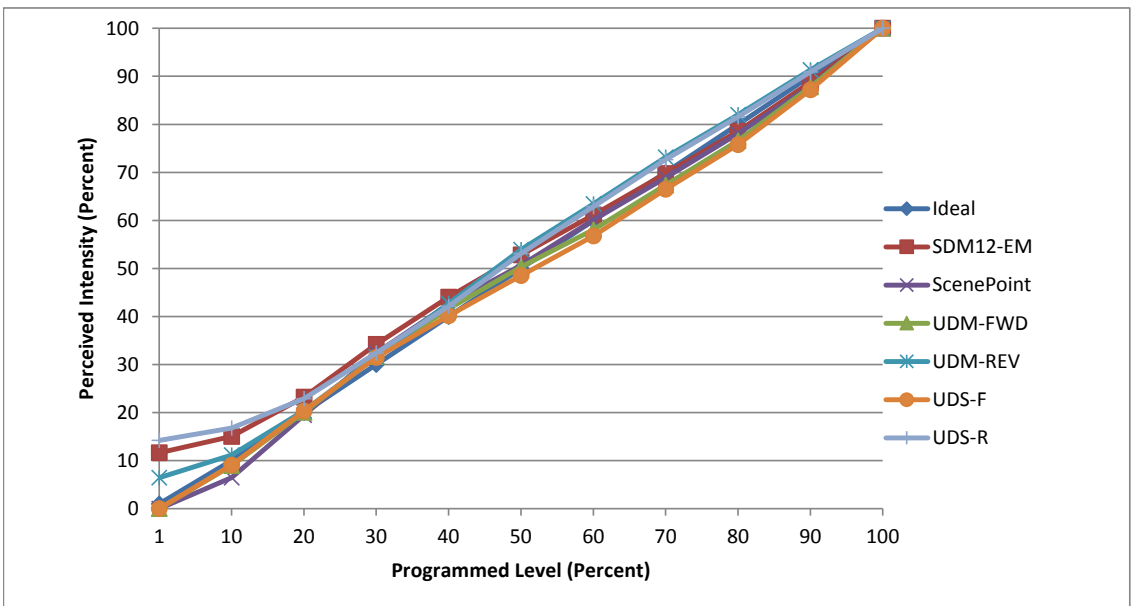


Manufacturer Leolus
Model ST64/ST21
Description Edison style LED bulb
Driver built-in
Nominal Power (W) 15
Dimming Control Forward and Reverse Phase
Product Range -
Test Date 27 June, 2018

Dimmer Tested Against:	SDM12-EM	SCP	UDM-FWD	UDM-REV	UDS-F	UDS-R
Pass/Fail	Pass	Pass	Pass	Pass	Pass	Pass
Best-Fit Power Profile:						
Minimum ON	14	15	15	19	19	19
Maximum ON	66	73	74	61	77	55
Adjust	100	100	100	77	95	100
Light Output Range (vs. non-dimmed)						
Maximum (Perceived), 120V	94.0%	94.8%	95.0%	95.9%	94.3%	93.8%
Minimum (Perceived)	10.9%	0.0%	0.0%	6.2%	0.0%	13.3%
Minimum (Measured)	1.2%	0.0%	0.0%	0.4%	0.0%	1.8%

Linearity Curves (Best-fit Power Profile Applied):



Observations: Tests were performed on a two unit configuration.

jwm