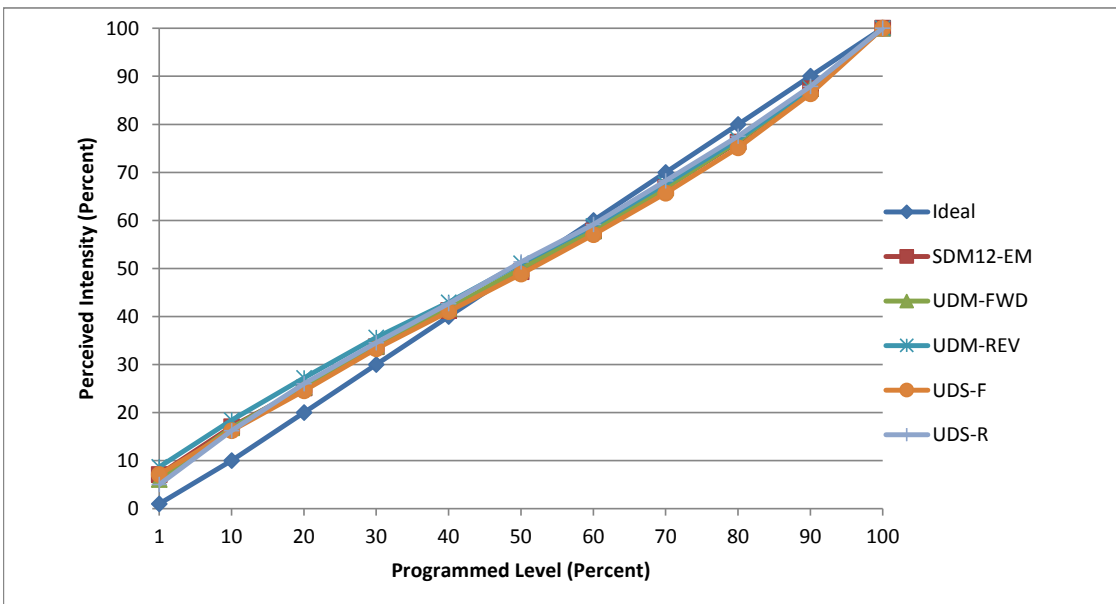


Manufacturer Juno
Model IC4AL-10LM-27K
Description 4" 2700 K 1000 L adjustable downlight
Driver Juno SE2161E-00
Nominal Power (W) 17
Dimming Control Forward and Reverse Phase
Product Range IC4AL 1000LM Housing
Test Date 21-Jan-19

Dimmer Tested Against:	SDM12-EM	ScenePoint	UDM-FWD	UDM-REV	UDS-F	UDS-R
Pass/Fail	Pass	Fail	Pass	Pass	Pass	Pass
Best-Fit Power Profile:						
Minimum ON	3	-	2.5	3.5	4.5	2
Maximum ON	69	-	70.5	70	74	64
Adjust	45	-	40	55	40	70
Light Output Range (vs. non-dimmed)						
Maximum (Perceived), 120V	95.2%	-	96.0%	95.1%	94.9%	94.7%
Minimum (Perceived)	6.8%	-	5.8%	8.2%	6.7%	4.7%
Minimum (Measured)	0.5%	-	0.3%	0.7%	0.5%	0.2%

Linearity Curves (Best-fit Power Profile Applied):



jwm

Observations: Test performed in single unit configuration.
 ScenePoint failed because of excessive flicker. Stabilization helped but not enough to pass.