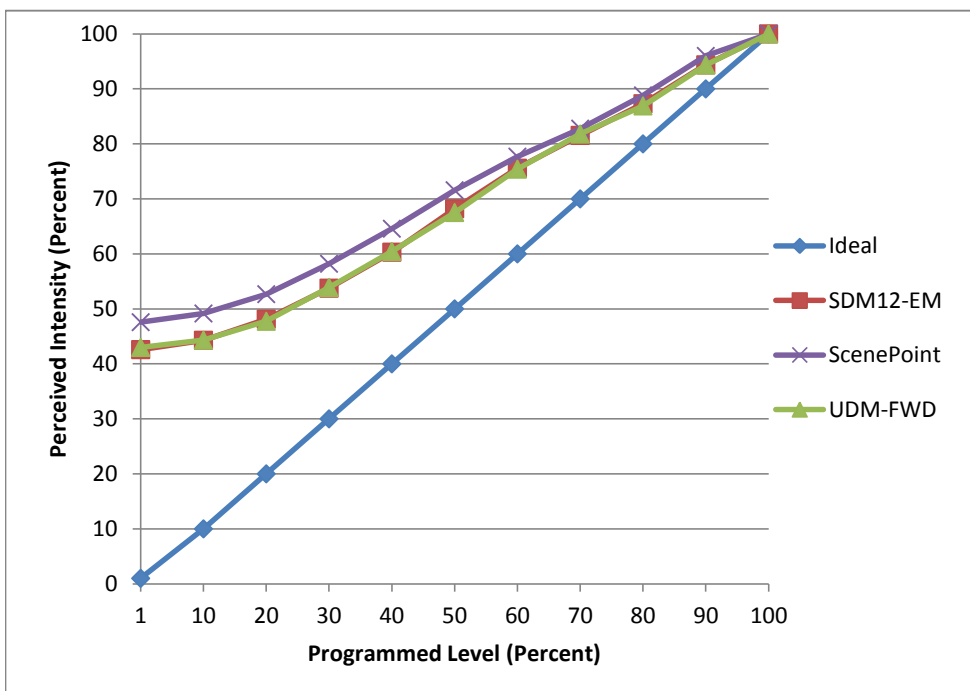


Manufacturer JQ America
Model JQ-G4-A02K27
Description BIPIN Base
Driver Juno Transformer S201
Nominal Power (W) 1.5
Dimming Control Forward
Product Range -
Test Date 10/10/2016

Dimmer Tested Against:	SDM12-EM	Scenepoint	UDM-FWD
Pass/Fail	Pass	Pass	Pass
Best-Fit Power Profile:			
Minimum ON	5	6	5
Maximum ON	17	18	17
Adjust	100	100	100
Light Output Range (vs. non-dimmed)			
Maximum (Perceived)	95.0%	95.6%	95.2%
Minimum (Perceived)	40.5%	45.5%	40.9%
Minimum (Measured)	16.4%	20.7%	16.8%

Linearity Curves (Best-fit Power Profile Applied):



Observations:

bgk