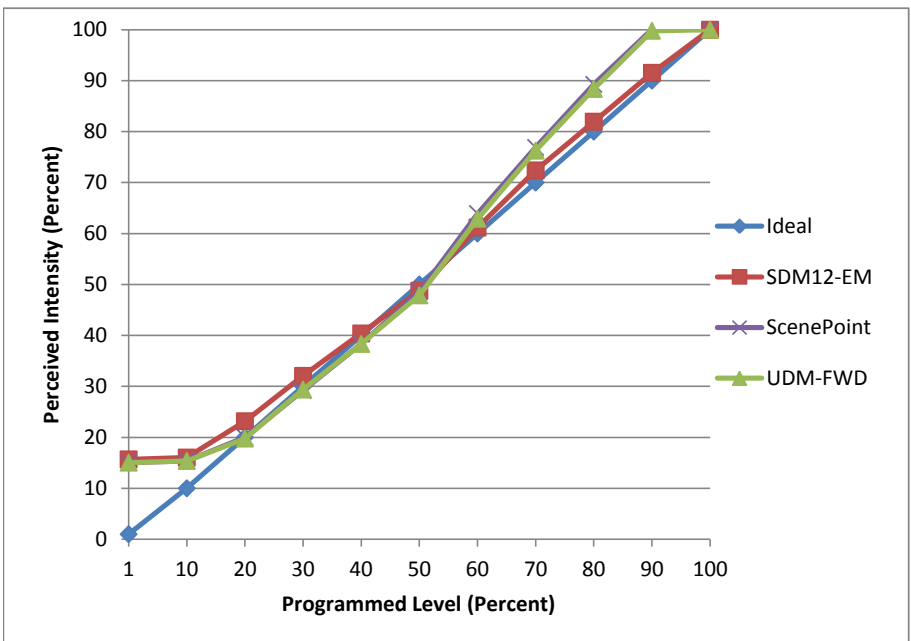


Manufacturer Halo
Model HU1036D930P
Description Light Bar
Driver 3104DC
Nominal Power (W) 13
Dimming Control Forward Phase
Product Range -
Test Date 8/7/2017

Dimmer Tested Against:	SDM12-EM	ScenePoint	UDM-FWD
Pass/Fail	Pass	Pass	Pass
Best-Fit Power Profile:			
Minimum ON	6	6	6
Maximum ON	80	98	99
Adjust	10	30	30
Light Output Range (vs. non-dimmed)			
Maximum (Perceived), 120V	95.7%	94.2%	94.4%
Minimum (Perceived)	15.0%	14.2%	14.2%
Minimum (Measured)	2.2%	2.0%	2.0%

Linearity Curves (Best-fit Power Profile Applied):



Observations:

bgk