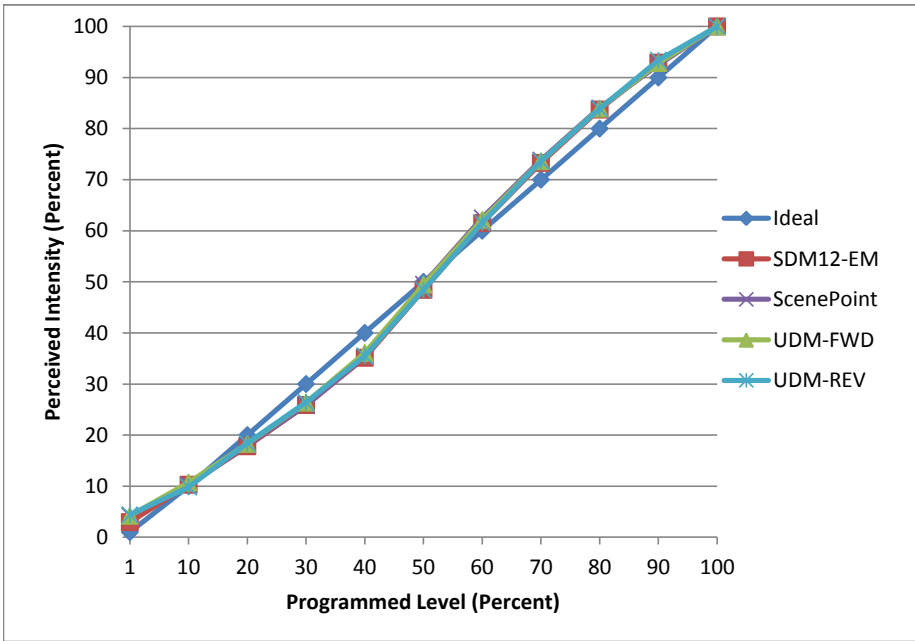


Manufacturer Green Creative
Model R20-E26-6.5W-WARM-DIM
Description R20 Lamp
Driver Integrated
Nominal Power (W) 6.5
Dimming Control Forward and Reverse
Product Range -
Test Date 4/27/2017

Dimmer Tested Against:	SDM12-EM	Scenepoint	UDM-FWD	UDM-REV
Pass/Fail	Pass	Pass	Pass	Pass
Best-Fit Power Profile:				
Minimum ON	1	2	2	2
Maximum ON	85	85	85	66
Adjust	40	30	35	65
Light Output Range (vs. non-dimmed)				
Maximum (Perceived)	95.2%	95.0%	95.3%	91.1%
Minimum (Perceived)	2.8%	4.0%	4.0%	4.0%
Minimum (Measured)	0.1%	0.2%	0.2%	0.2%

Linearity Curves (Best-fit Power Profile Applied):



Observations:

bgk