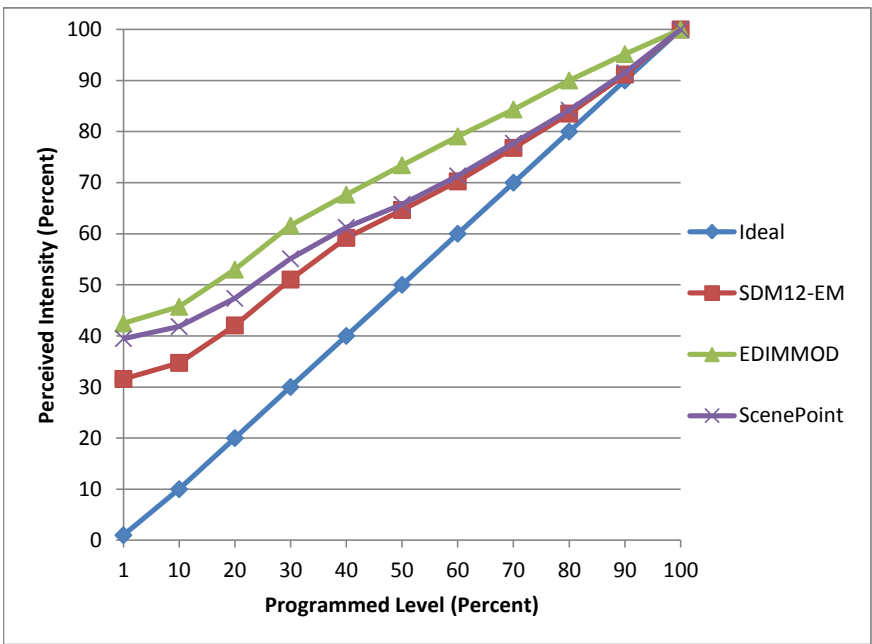


**Manufacturer** GreenCreative  
**Model** 8BR30G4DIM/827  
**Description** BR30 E26 8W  
**Driver** Integrated  
**Nominal Power (W)** 8W  
**Dimming Control** Forward and Reverse  
**Product Range**  
**Test Date** 4/7/2016

Dimmer Tested Against:	SDM12-EM	EDIMMOD	ScenePoint
Pass/Fail	Pass	Pass	Pass
<b>Best-Fit Power Profile:</b>			
Minimum ON	5	4	8
Maximum ON	93	85	93
Adjust	100	100	100
<b>Light Output Range (vs. non-dimmed)</b>			
Maximum (Perceived)	95.3%	95.3%	95.3%
Minimum (Perceived)	30.1%	40.5%	37.6%
Minimum (Measured)	9.1%	16.4%	14.1%

**Linearity Curves (Best-fit Power Profile Applied):**



**Observations:**

Transitional jump early in the dimming  
 Recommended use is forward phase scenepoint and reverse not as good performance