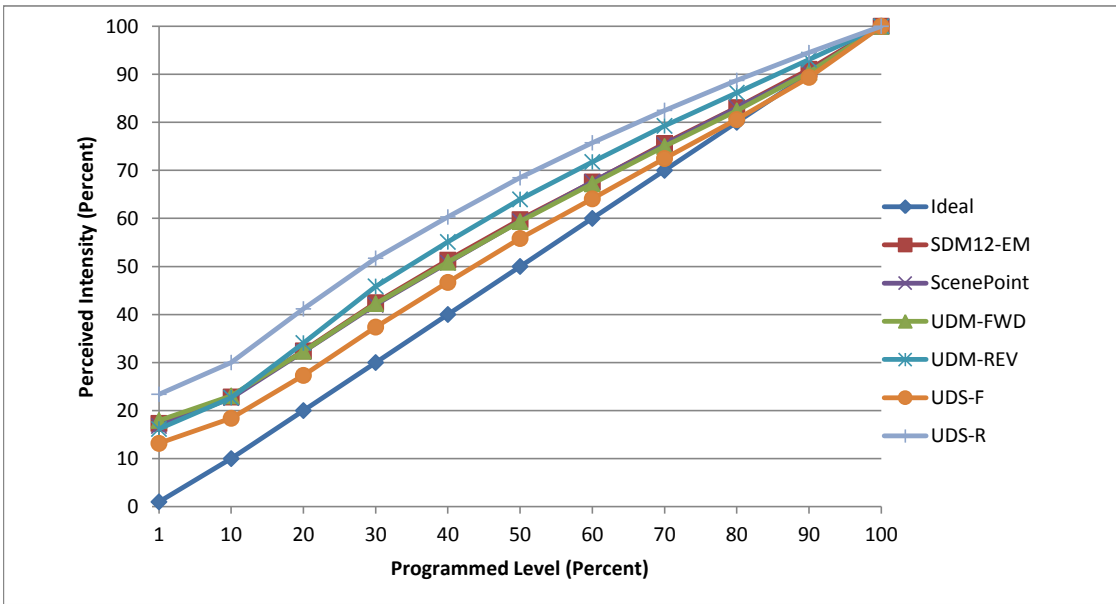


**Manufacturer** Glimmer Lighting  
**Model** GLB-10PAR30SN-3040  
**Description** PAR30SN Lamp  
**Driver** Integrated  
**Nominal Power (W)** 10  
**Dimming Control** Forward and Reverse Phase  
**Product Range** -  
**Test Date** 9/20/2017

Dimmer Tested Against:	SDM12-EM	SCP	UDM-FWD	UDM-REV	UDS-F	UDS-R
Pass/Fail	Pass	Pass	Pass	Pass	Pass	Pass
<b>Best-Fit Power Profile:</b>						
Minimum ON	1	1	1	1	1	1
Maximum ON	93	96	96	92	96	87
Adjust	100	100	100	100	100	100
<b>Light Output Range (vs. non-dimmed)</b>						
Maximum (Perceived), 120V	95.4%	95.2%	95.2%	95.6%	95.3%	95.2%
Minimum (Perceived)	16.5%	16.0%	17.1%	15.5%	12.6%	22.3%
Minimum (Measured)	2.7%	2.6%	2.9%	2.4%	1.6%	5.0%

Linearity Curves (Best-fit Power Profile Applied):



**Observations:**

bgk