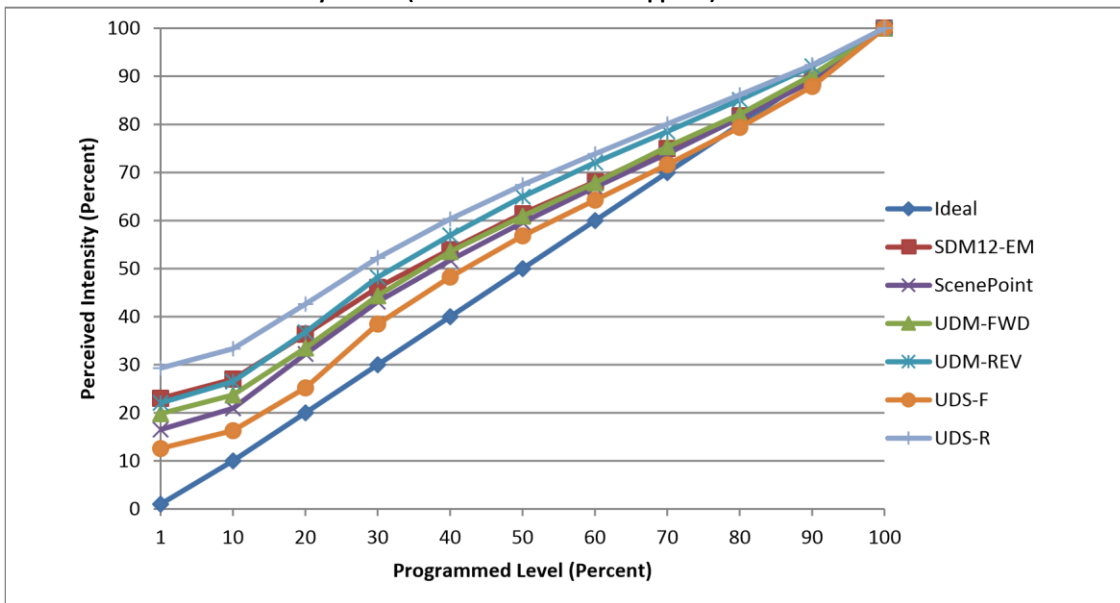




Manufacturer Satco
Model S9581
Description 810 l 2700 k
 Edison bulb
Driver built-in
Nominal Power (W) 6.5
Dimming Control Forward and Reverse Phase
Product Range -
Test Date 27 June, 2018

Dimmer Tested Against:	SDM12-EM	SCP	UDM-FWD	UDM-REV	UDS-F	UDS-R
Pass/Fail	Pass	Pass	Pass	Pass	Pass	Pass
Best-Fit Power Profile:						
Minimum ON	3	3	3	3	3	3
Maximum ON	92	95	89	90	95	91
Adjust	100	100	100	100	100	100
Light Output Range (vs. non-dimmed)						
Maximum (Perceived), 120V	95.1%	95.4%	95.1%	95.5%	96.0%	96.0%
Minimum (Perceived)	21.9%	15.8%	18.9%	21.1%	12.1%	28.1%
Minimum (Measured)	4.8%	2.5%	3.6%	4.4%	1.5%	7.9%

Linearity Curves (Best-fit Power Profile Applied):



Observations: Tests were performed on a two unit configuration.



jwm