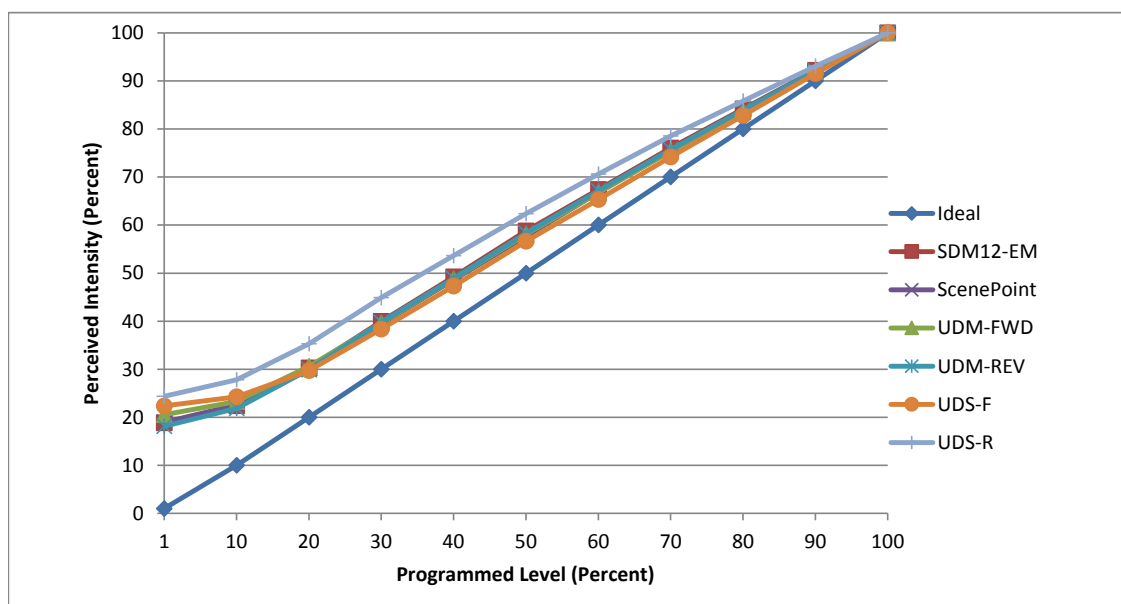


**Manufacturer** FETI Electric  
**Model** CELEDR6/927/2 (C)  
**Description** 2700 k 850 L 5" retrofit downlight  
**Driver** built-in  
**Nominal Power (W)** 9.4  
**Dimming Control** Forward and Reverse Phase  
**Product Range** enhance LED dimmable  
**Test Date** 5 November, 2020

Dimmer Tested Against:	SDM12-EM	ScenePoint	UDM-FWD	UDM-REV	UDS-F	UDS-R
<b>Commercial Pass/Fail</b>	pass	pass	pass	pass	pass	pass
<b>Residential Pass/Fail</b>	pass	pass	pass	pass	pass	pass
<b>Best-Fit Power Profile:</b>						
Minimum ON	3	4	4	4	5	3
Maximum ON	65	66.5	66	64	69.5	58
Adjust	10	100	100	100	100	100
<b>Light Output Range (vs. non-dimmed)</b>						
Maximum (Perceived), 120V	95.1%	94.6%	94.5%	94.9%	95.2%	95.1%
Minimum (Perceived)	17.9%	17.9%	19.4%	17.2%	21.3%	23.2%
Minimum (Measured)	3.2%	3.2%	3.8%	3.0%	4.5%	5.4%

Linearity Curves (Best-fit Power Profile Applied):



jwm

**Observations:** Test performed with unusable 2 unit configuration.