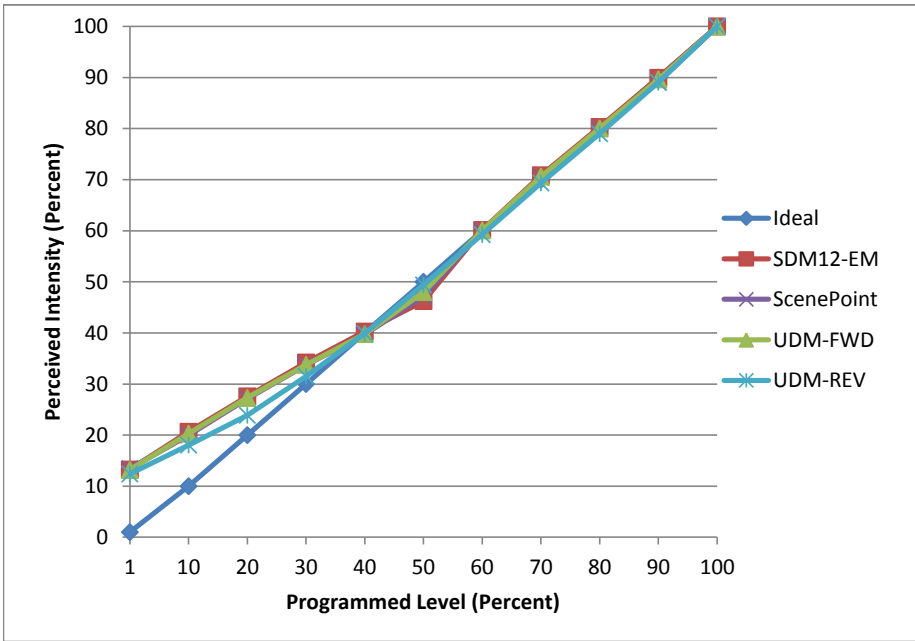


Manufacturer Eaton
Model LD6A20D010TE
Description 6 in Downlight
Driver Eaton XEL-030DEU-CX700-042-DNT02
Nominal Power (W) 30
Dimming Control Forward and Reverse
Product Range -
Test Date 10/4/2016 11/1/2016

Dimmer Tested Against:	SDM12-EM	Scenepoint	UDM-FWD	UDM-REV
Pass/Fail	Pass	Pass	Pass	Pass
Best-Fit Power Profile:				
Minimum ON	3	3	3	12
Maximum ON	82	83	84	84
Adjust	65	65	65	25
Light Output Range (vs. non-dimmed)				
Maximum (Perceived)	95.4%	95.5%	95.4%	95.3%
Minimum (Perceived)	12.6%	12.8%	12.6%	11.8%
Minimum (Measured)	1.6%	1.6%	1.6%	1.4%

Linearity Curves (Best-fit Power Profile Applied):



Observations:

bgk