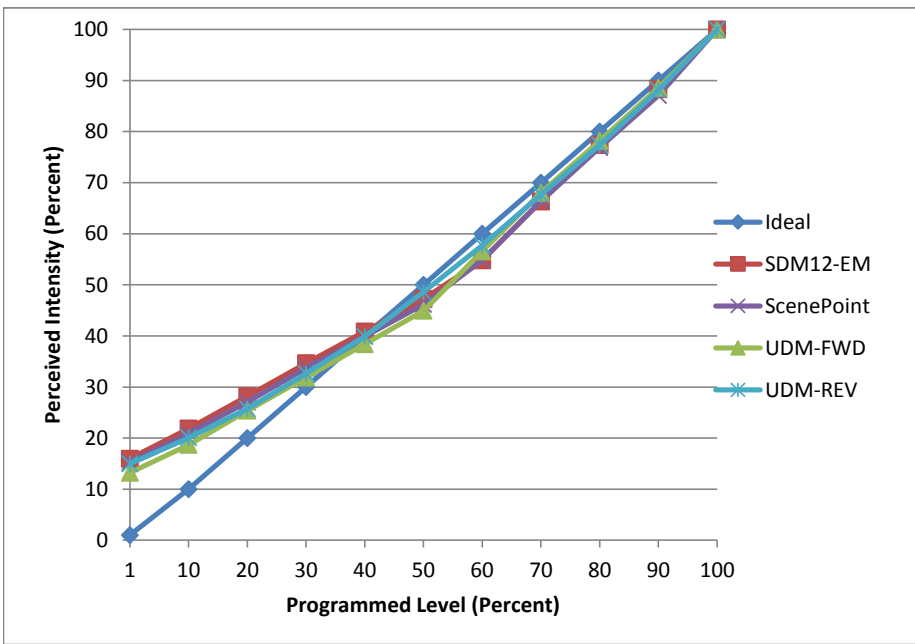


Manufacturer Eaton
Model LD6A20D010TE
Description 6 in Downlight
Driver Eaton XEL-030DEU-CX250-042-DNT02
Nominal Power (W) 11
Dimming Control Forward and Reverse
Product Range -
Test Date 9/29/2016 11/1/2016

Dimmer Tested Against:	SDM12-EM	Scenepoint	UDM-FWD	UDM-REV
Pass/Fail	Pass	Pass	Pass	Pass
Best-Fit Power Profile:				
Minimum ON	6	6	5	17
Maximum ON	83	82	82	82
Adjust	70	70	75	50
Light Output Range (vs. non-dimmed)				
Maximum (Perceived)	95.4%	95.5%	95.5%	95.5%
Minimum (Perceived)	15.2%	14.6%	12.6%	14.3%
Minimum (Measured)	2.3%	2.1%	1.6%	2.0%

Linearity Curves (Best-fit Power Profile Applied):



Observations:

Start is slow

bgk