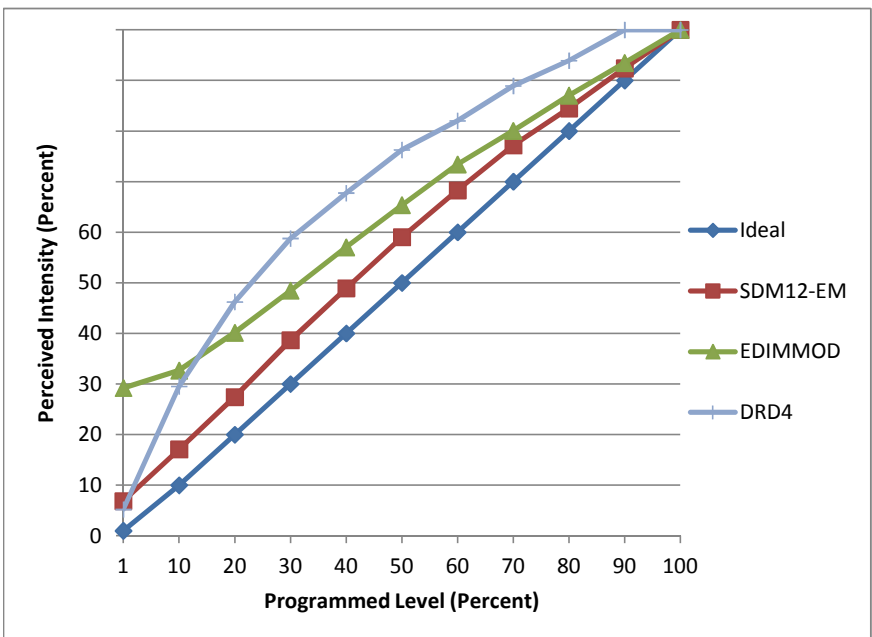


Manufacturer DMFLighting
Model DME-VWX27Z
Description Retrofit Recessed LED Module
Driver Integral
Nominal Power (W) 14.5
Dimming Control forward- and reverse-phase
Product Range
Test Date 7/21/2014

Dimmer Tested Against:	SDM12-EM	EDIMMOD	DRD4
Pass/Fail	Pass	Pass	Pass
Best-Fit Power Profile:			Standard
Minimum ON	1.5	3	
Maximum ON	78	72	
Adjust	100	100	
Light Output Range (vs. non-dimmed)			
Maximum (Perceived)	95.3%	95.1%	100.0%
Minimum (Perceived)	6.5%	27.8%	5.2%
Minimum (Measured)	0.4%	7.7%	0.3%

Linearity Curves (Best-fit Power Profile Applied):



Observations:

Slight audible buzz when dimmed forward-phase
 For ScenePoint, Minimum On 2.5
 DRD4 Minimum reliable on level is 3%