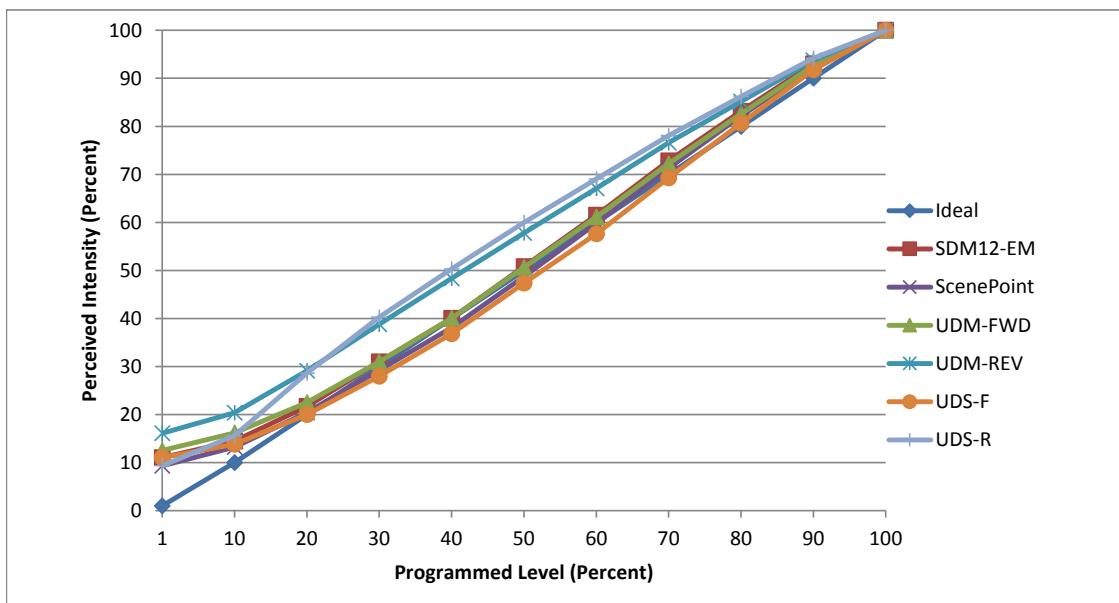


**Manufacturer** Cree  
**Model** TRDL4-0782700FH50-12DE26-1-11  
**Description** 4" 2700 K 790 L recessed downlight  
**Driver** built-in  
**Nominal Power (W)** 10.5  
**Dimming Control** Forward and Reverse Phase  
**Product Range** TRDL4 Series  
**Test Date** 21-Jan-19

Dimmer Tested Against:	SDM12-EM	ScenePoint	UDM-FWD	UDM-REV	UDS-F	UDS-R
Pass/Fail	Pass	Pass	Pass	Pass	Pass	Pass
<b>Best-Fit Power Profile:</b>						
Minimum ON	2	3	2.5	2.5	3.5	1.3
Maximum ON	75	76.5	75.5	71	80	62.5
Adjust	100	100	100	100	100	100
<b>Light Output Range (vs. non-dimmed)</b>						
Maximum (Perceived), 120V	94.8%	95.1%	95.1%	95.6%	95.2%	95.1%
Minimum (Perceived)	10.5%	8.9%	11.9%	15.4%	10.5%	8.9%
Minimum (Measured)	1.1%	0.8%	1.4%	2.4%	1.1%	0.8%

Linearity Curves (Best-fit Power Profile Applied):



jwm

**Observations:** Test performed in single unit configuration.  
 With no ramp or fade set, the unit goes beyond then back to actual dim level within one second.