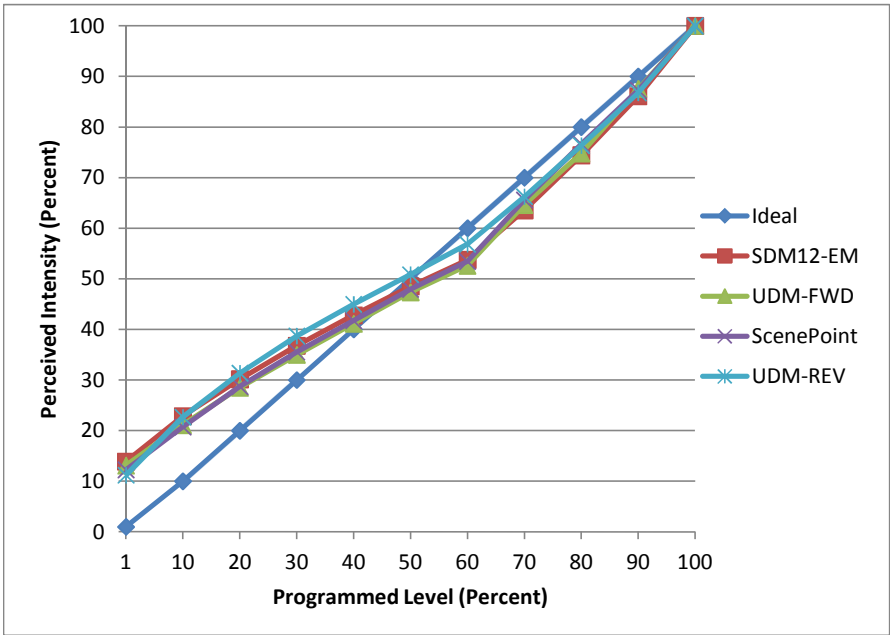


Manufacturer Cooper
Model ML4 LED
Description LED Recessed
Driver Xenerqi XEL-015PAU-CX300-042-TNT01
Nominal Power (W) 24
Dimming Control Forward and Reverse
Product Range
Test Date 4/22/2016

Dimmer Tested Against:	SDM12-EM	ScenePoint	UDM-FWD	UDM-REV
Pass/Fail	Pass	Pass	Pass	Pass
Best-Fit Power Profile:				
Minimum ON	5	4	5	3
Maximum ON	91.5	91	92	93
Adjust	50	50	50	50
Light Output Range (vs. non-dimmed)				
Maximum (Perceived)	95.5%	95.0%	95.1%	95.5%
Minimum (Perceived)	13.3%	11.7%	12.5%	10.7%
Minimum (Measured)	1.8%	1.4%	1.6%	1.1%

Linearity Curves (Best-fit Power Profile Applied):



Observations:
 All low-end trim (Minimum On level) applied so as to assure <=1s startup.

bgk