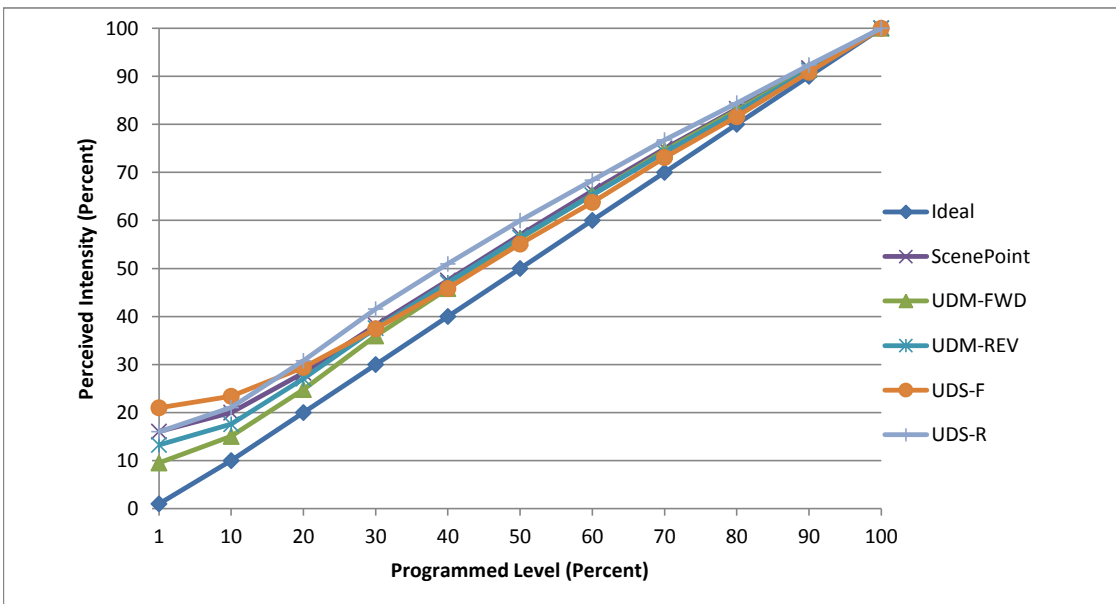


Manufacturer Contech
Model CTL84C1S27D-B
Description Track light
Driver Integrated
Nominal Power (W) 10
Dimming Control Forward and Reverse Phase
Product Range -
Test Date 2/7/2018

Dimmer Tested Against:	SDM12-EM	SCP	UDM-FWD	UDM-REV	UDS-F	UDS-R
Pass/Fail	Fail	Pass	Pass	Pass	Pass	Pass
Best-Fit Power Profile:						
Minimum ON	-	3	See Below	3	6	2
Maximum ON	-	75	75	75	79	68
Adjust	-	100	100	100	100	100
Light Output Range (vs. non-dimmed)						
Maximum (Perceived), 120V	95.0%	95.2%	95.6%	95.5%	95.5%	95.3%
Minimum (Perceived)	15.0%	15.3%	9.1%	12.7%	20.0%	15.3%
Minimum (Measured)	2.3%	2.3%	0.8%	1.6%	4.0%	2.3%

Linearity Curves (Best-fit Power Profile Applied):



Observations:

On The UDM-FWD 2 is only the minimum if the light is not put at 1% from cold start otherwise use 3
 SDM Had un reliable performance
 bgk