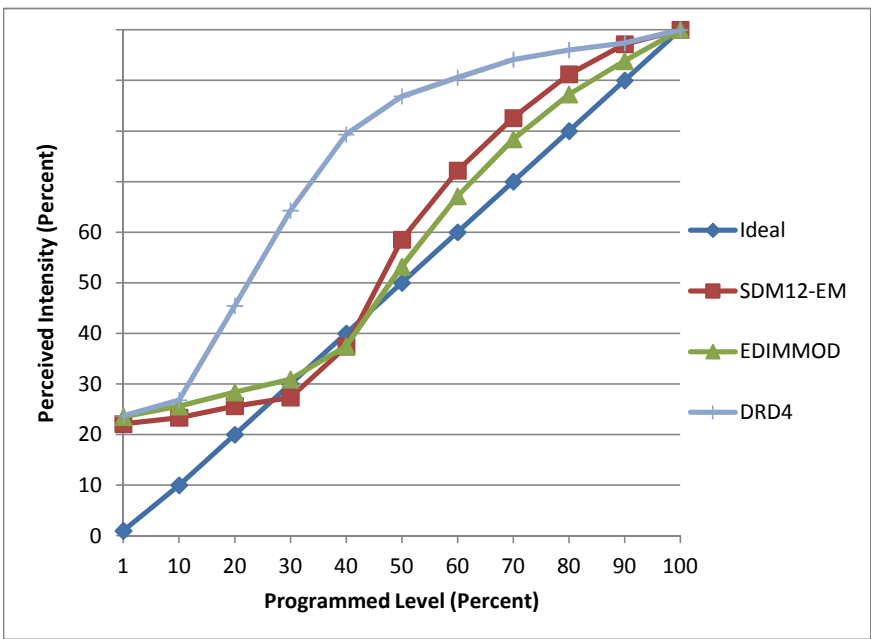


**Manufacturer** Troy-CSL Lighting  
**Model** EDL5-IC-WW  
**Description** 5" LED Downlight  
**Driver** Integral  
**Nominal Power (W)** 38  
**Dimming Control** forward- and reverse-phase  
**Product Range**  
**Test Date** 8/12/2014

Dimmer Tested Against:	SDM12-EM	EDIMMOD	DRD4
Pass/Fail	Pass	Fail*	Pass
Best-Fit Power Profile:			Standard
Minimum ON	3.5	1	
Maximum ON	75	70	
Adjust	100	100	
Light Output Range (vs. non-dimmed)			
Maximum (Perceived)	95.7%	96.0%	100.0%
Minimum (Perceived)	21.2%	22.6%	23.7%
Minimum (Measured)	4.5%	5.1%	5.6%

Linearity Curves (Best-fit Power Profile Applied):



**Observations:**

\*There is an issue with reverse-phase dimming such that when the light is off, if turned on to dim levels below 20%, the light does not turn on. Increasing the minimum on value to eliminate such behavior raises the minimum dimming level beyond acceptable value. For this reason, it is not recommended to apply this product to a reverse-phase dimmer.

Minimum On level for a single-fixture load is, oddly, lower than for a two-fixture load. Results on multi-fixture loads may vary.