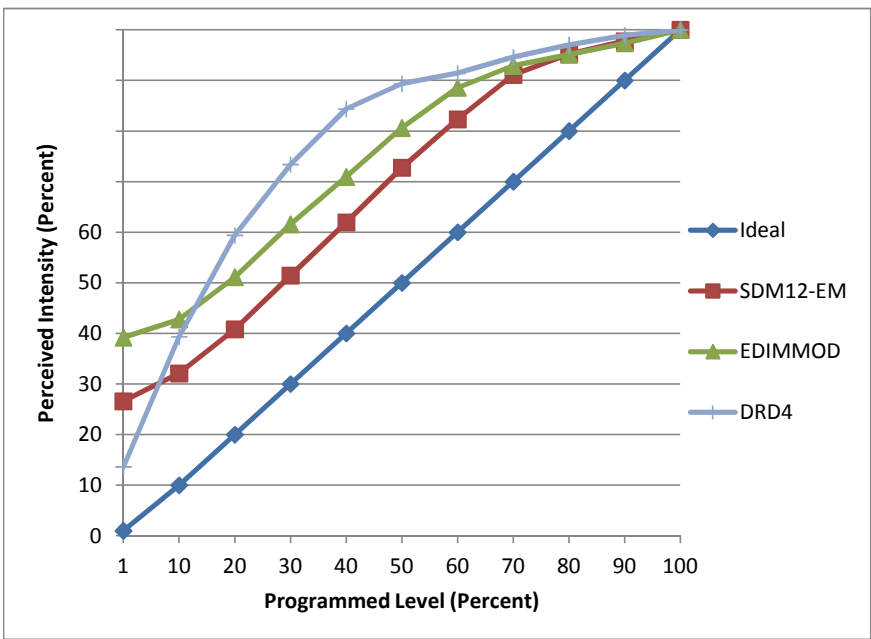


**Manufacturer** Troy-CSL Lighting  
**Model** EDL-ADJ-WW-3  
**Description** 3" Adjustable LED Downlight  
**Driver** Integral  
**Nominal Power (W)** 16  
**Dimming Control** forward- and reverse-phase  
**Product Range**  
**Test Date** 8/12/2014

Dimmer Tested Against:	SDM12-EM	EDIMMOD	DRD4
Pass/Fail	Pass	Pass	Pass*
Best-Fit Power Profile:			Standard
Minimum ON	2.5	2.5	
Maximum ON	62	62	
Adjust	100	100	
Light Output Range (vs. non-dimmed)			
Maximum (Perceived)	95.0%	95.1%	100.0%
Minimum (Perceived)	25.3%	37.3%	13.6%
Minimum (Measured)	6.4%	13.9%	1.9%

Linearity Curves (Best-fit Power Profile Applied):



**Observations:**

\*RFLC dimmer requires a minimum of two fixtures because of higher minimum load rating  
 RFLC minimum on at 3%