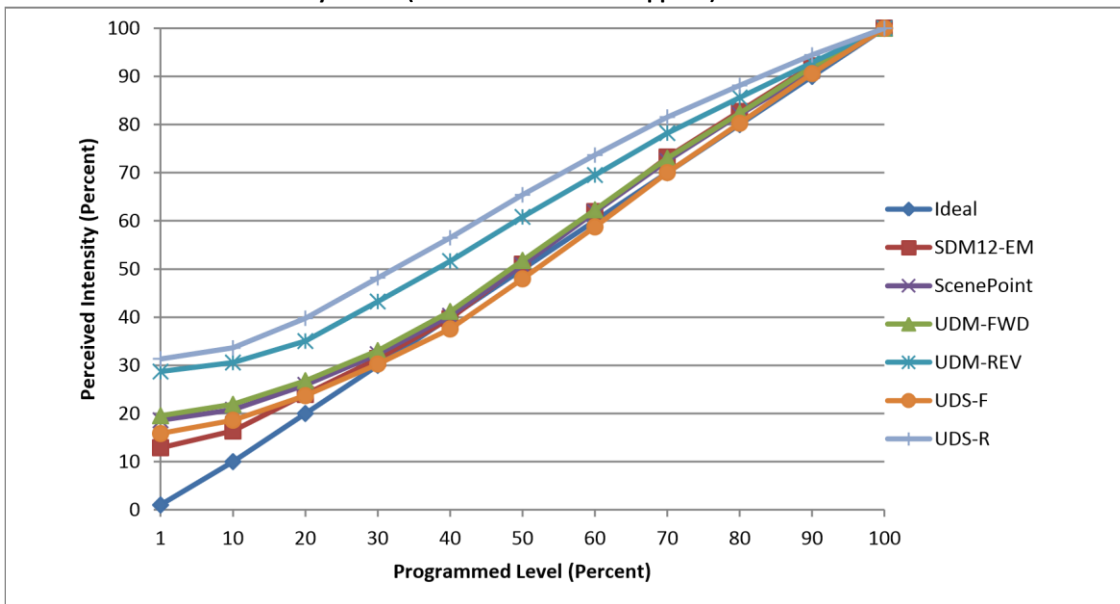




Manufacturer Bulbrite
Model #772734
Description PAR30L
Driver Integrated
Nominal 13
Power (W)
Dimming Forward and
Control Reverse Phase
Product -
Range
Test Date 4/16/2018

Dimmer Tested Against:	SDM12-EM	SCP	UDM-FWD	UDM-REV	UDS-F	UDS-R
Pass/Fail	Pass	Pass	Pass	Pass	Pass	Pass
Best-Fit Power Profile:						
Minimum ON	1	3	3	5	3	3
Maximum ON	74	76	74	68	79	60
Adjust	100	100	100	100	95	100
Light Output Range (vs. non-dimmed)						
Maximum (Perceived), 120V	95.3%	95.4%	95.1%	95.4%	95.1%	95.2%
Minimum (Perceived)	12.3%	17.7%	18.6%	27.4%	15.1%	29.9%
Minimum (Measured)	1.5%	3.1%	3.5%	7.5%	2.3%	8.9%

Linearity Curves (Best-fit Power Profile Applied):



Observations:

bgk