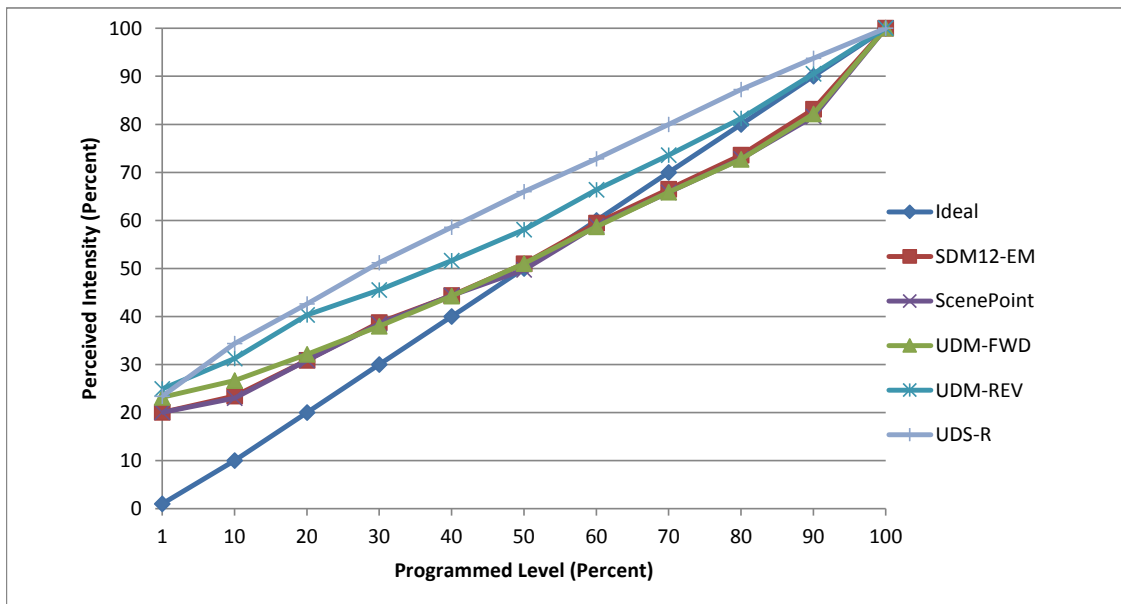


**Manufacturer** American Lighting  
**Model** EM4-30-WH  
**Description** 4 in 3000k downlight  
**Driver** included  
**Nominal Power (W)** unspecified  
**Dimming Control** Forward and Reverse Phase  
**Product Range** Epiq  
**Test Date** 20 November, 2018

Dimmer Tested Against:	SDM12-EM	SCP	UDM-FWD	UDM-REV	UDS-F	UDS-R
Pass/Fail	Pass	Pass	Pass	Pass	Fail	Pass
<b>Best-Fit Power Profile:</b>						
Minimum ON	6	8	7	6	-	3
Maximum ON	98.4	99.4	95.4	96.4	-	97.4
Adjust	100	100	100	100	-	100
<b>Light Output Range (vs. non-dimmed)</b>						
Maximum (Perceived), 120V	91.0%	90.5%	90.8%	76.9%	0.0%	78.1%
Minimum (Perceived)	18.2%	18.1%	21.1%	19.2%	0.0%	18.3%
Minimum (Measured)	3.3%	3.3%	4.4%	3.7%	0.0%	3.3%

Linearity Curves (Best-fit Power Profile Applied):



**Observations:**

Testing done in three unit configuration.  
 Full intensity for these fixtures is not a practical full on: it dims to a point then snaps up to full on without smooth di  
 max on reflects maximum within dim curve which is closest value possible to maximum perceived.  
 UDS forward-phase dimming failed because of excessive flickering on both high and low end.

jwm