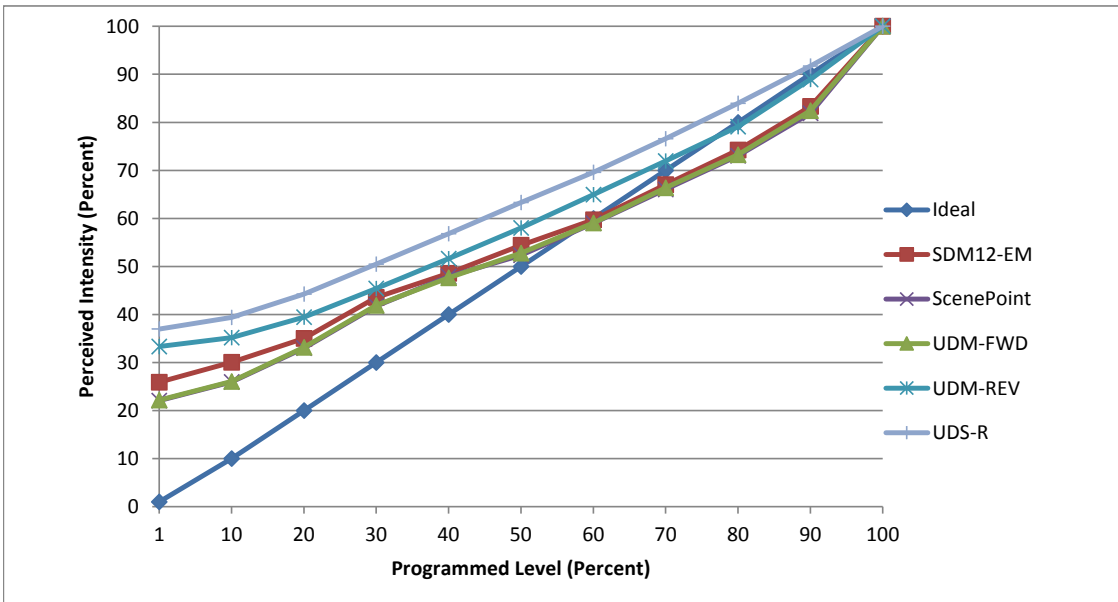


Manufacturer American Lighting
Model E4-RE-30-WH
Description 4 in 3000k downlight
Driver included
Nominal Power (W) unspecified
Dimming Control Forward and Reverse Phase
Product Range Epiq
Test Date 26 November, 2018

| Dimmer Tested Against: | SDM12-EM | SCP | UDM-FWD | UDM-REV | UDS-F | UDS-R |
|--|----------|-------|---------|---------|-------|-------|
| Pass/Fail | Pass | Pass | Pass | Pass | Fail | Pass |
| Best-Fit Power Profile: | | | | | | |
| Minimum ON | 6.5 | 8 | 6.7 | 6 | - | 5.5 |
| Maximum ON | 98.4 | 99.4 | 98.2 | 97.2 | - | 97.3 |
| Adjust | 100 | 100 | 100 | 100 | - | 100 |
| Light Output Range (vs. non-dimmed) | | | | | | |
| Maximum (Perceived), 120V | 86.5% | 86.4% | 86.1% | 73.9% | - | 74.5% |
| Minimum (Perceived) | 22.4% | 19.1% | 19.1% | 24.6% | - | 27.5% |
| Minimum (Measured) | 5.0% | 3.6% | 3.6% | 6.1% | - | 7.6% |

Linearity Curves (Best-fit Power Profile Applied):



Observations: Testing done in three unit configuration.
 A shelf was noticed between full-on and highest dim level; Max On's set to highest dimmable level.
 UDS Forward-Phase failed because of excessive flickering on lower half of dim.

jwm