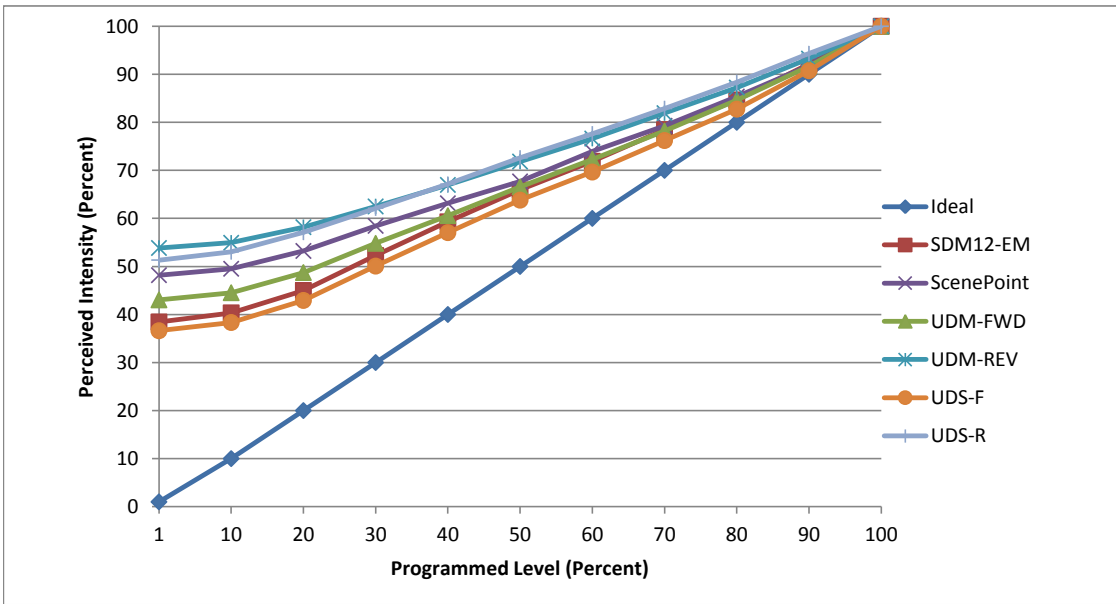


**Manufacturer** Aamsco  
**Model** LED 8W A19HYBRID DIM  
**Description** A19  
**Driver** Integrated  
**Nominal Power (W)** 8  
**Dimming Control** Forward and Reverse Phase  
**Product Range** -  
**Test Date** 11/15/2017

Dimmer Tested Against:	SDM12-EM	SCP	UDM-FWD	UDM-REV	UDS-F	UDS-R
Pass/Fail	Pass	Pass	Pass	Pass	Pass	Pass
<b>Best-Fit Power Profile:</b>						
Minimum ON	17	23	20	23	23	17
Maximum ON	75	79	79	73	85	68
Adjust	100	100	100	100	100	100
<b>Light Output Range (vs. non-dimmed)</b>						
Maximum (Perceived), 120V	94.9%	95.0%	95.0%	95.1%	95.0%	95.3%
Minimum (Perceived)	36.5%	45.8%	40.9%	51.2%	34.8%	48.9%
Minimum (Measured)	13.3%	21.0%	16.7%	26.2%	12.1%	24.0%

Linearity Curves (Best-fit Power Profile Applied):



**Observations:**

bgk