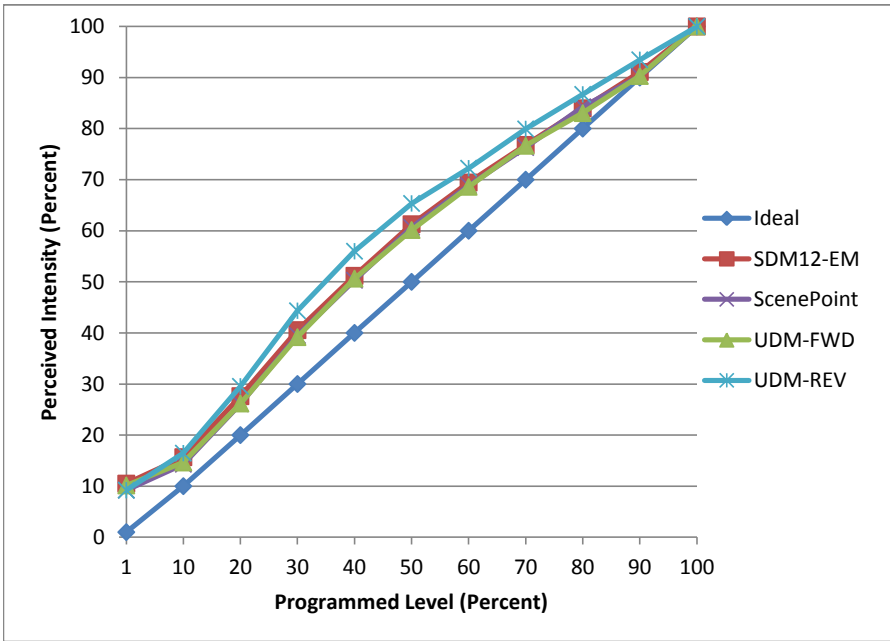


Manufacturer Z Light
Model PAR20-01-TG
Description PAR 20
Driver Integrated
Nominal Power (W) 5
Dimming Control Forward and Reverse
Product Range -
Test Date 6/27/2016

Dimmer Tested Against:	SDM12-EM	ScenePoint	UDM-FWD	UDM-REV
Pass/Fail	Pass	Pass	Pass	Pass
Best-Fit Power Profile:				
Minimum ON	1	1	1	1
Maximum ON	92	94	93	86
Adjust	100	100	100	100
Light Output Range (vs. non-dimmed)				
Maximum (Perceived)	95.6%	95.5%	95.0%	95.1%
Minimum (Perceived)	10.0%	8.8%	9.6%	8.8%
Minimum (Measured)	1.0%	0.8%	0.9%	0.8%

Linearity Curves (Best-fit Power Profile Applied):



Observations:

Minimum Load issue
 Slight buzzing when close to the bulb
 bgk